



CHAPEL FARM

ESTATE
EST. 1905
SWAN VALLEY
WESTERN AUSTRALIA



WEDDING PACKAGE

TABLE OF CONTENTS



05

CEREMONY

06

CHAPEL FARM
(THE COURTYARD)



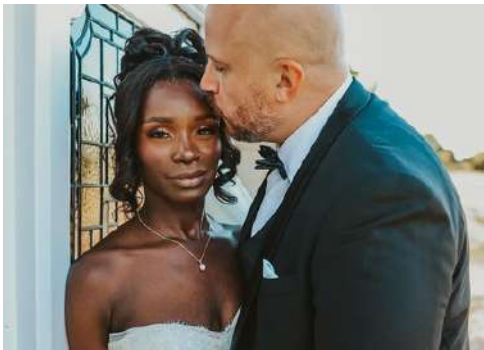
08

ESTATE AT
CHAPEL FARM
(THE CHURCH BARN)



10

WINE & DINE
ADDITIONAL HIRE
ITEMS



19

ACCOMMODATION



21

VENDORS & SUPPLIERS



24

FINER DETAILS



FROM THE FAMILY



To the happy couple,

Chapel Farm Est. 1905 was a working farm for over 90 years. In 2000, we bought the bones of Chapel Farm. We built the venue in honour of the Swan Valley & its tumultuous religious history. In 2021, our family bought Jane Brook Estate & the vineyards from the Atkinson family. Paying homage to the past and present hard working families, we are pleased to announce the birth of Chapel Farm Estate.

There is a story behind nearly everything we have sourced to handcraft the two venues. 100 year old timbers salvaged from the old Midland railway workshops. Stone hand picked from Toodyay. 200 year old stained glass from an English Cathedral.

We don't boast perfection, we believe in hard work and dedication. This place has grown over the years. We believe in good food, utilising fresh and local produce. Most importantly, we feel that no matter what the occasion "every meal should feel like home."

Our menu is designed to encompass the warmth felt in enjoying good food with friends and family, complimented by wine from our vineyards, beers brewed in house, spirits purified in our still.

On behalf of our Chapel Farm family, we invite you, your friends and your family to celebrate your love. We welcome you into our home.

Darren & the Chapel Farm Estate family.

YOUR WEDDING



Planning your special day with us.

Our team of professional staff have the passion and experience to assist you in tailoring either venue for a stress-free wedding that is entirely unique.

We help you in creating your personalised wedding theme and ensure you are meeting your milestones along with providing a few tips along the way. We work hard to build your day from the ground up. When you choose to hold your wedding here, we offer continued support, so that you can remain calm and confident as your big day approaches.

We provide you with a floor plan and time schedule of events from your arrival at the venue, ensuring your day is what you envisioned.

Included in all wedding receptions is the complimentary use of Chapel Farm Estate's current cutlery, crockery, glassware, white linen napkins and our raw metal chairs, staff to service your wedding, use of the property for photography, complimentary cutting and platter service of your wedding cake.

Seated receptions include the complimentary use of Marri wood tables, relaxed and cocktail style events include the complimentary use of Marri wood tables and wine barrels with metal stools.

Please ask our wedding coordinator to view our current list of included items, upgrades and additional hire items. Please note complimentary items are dependent on limits and availability. Supply of furniture by outside vendors and suppliers may incur a fee, for access prior and post event and the removal/storage of our venues items. Please ensure you check approval prior to booking through an outside vendor or hire company.

CEREMONY

The moment you share your vows.



Dogs are welcome for ceremonies!

CEREMONY LOCATIONS

Our ceremony locations are exclusive to each venue.

Chapel Farm

The Lake

Estate at Chapel Farm

Vignacourt Gardens

Jane Brook Deck

Chapel Lane

Ceremony Arbours

We have a selection of arbours available for hire. Please speak with your wedding coordinator to find out availability.

Additional chairs available from \$6 per chair (page 14).

CEREMONY PACKAGES

The Essentials \$500 (not available at Chapel Lane)

32 x of our raw metal chairs

Polished wood signing table

Set in the ceremony location of your choice

The Essentials + Arbour \$600 (not available at Chapel Lane)

32 x of our raw metal chairs

Polished wood signing table

Our wooden two post arbour

Set in the ceremony location of your choice

The White Ceremony \$800 (not available at Chapel Lane)

32 x of our white wash Tiffany chairs

Polished wood signing table

Our white hexagon arbour

Set in the ceremony location of your choice

Chapel Lane Ceremony \$750 (available for Chapel Lane only)

32 x of our White Americano Chairs

Our White Signing Table



CHAPEL FARM

COURTYARD RECEPTION

Chapel Farm Est. 1905 was a working farm for over 90 years. In 2000 the Walker Family brought the bones of Chapel Farm. Shaded by our 200 year old Sugar Gum, the original homestead turned bar overlooks the Courtyard and natural lake. The semi-enclosed courtyard is protected from the elements while still being outside. Your guests can escape the hustle and bustle of city life and enjoy a rustic farm atmosphere with all the comforts - all while being only 30 minutes from the Perth CBD.

Chapel Farm boasts an accessible, multi-level location to say "I do". Looking out over our natural lake and with views of the Perth hills in the distance, you and your guests are shaded from the afternoon sun by the Chapel, flame trees, and Japanese tallows. This exclusive event space has a seated capacity of 150 guests. The courtyard includes a built-in Jarrah dance-floor, paired with our complimentary fairy and festoon lighting.

CHAPEL FARM



THE LAKE Ceremony Area

An accessible outdoor, five-level paved setting; overlooking our pristine natural lake with views of farm animals, pastures and the Perth hills.

Please refer to page 5 for pricing details.



THE WATERFALL AREA Canapes & Pre-Dinner Drinks

A private, multi-level area shaded by surrounding flame trees. Complemented by expansive lush gardens and a gentle waterfall flowing into our creek and lake, combine both areas, or use either the upper or lower area with access to the courtyard's exclusive bar.



THE CHAPEL & PRESBYTERY Multi-use Area

Our Chapel and Presbytery are the perfect option for a backdrop boasting charisma. It pairs stunningly with the private ceremony area and provides an exquisite location for photographic opportunities.



THE COURTYARD Main Reception Area

Chapel Farm's semi-enclosed event space with a seated capacity of 150 guests. It is undercover and protected from the elements, while overlooking our lake and waterfall area. The Courtyard was built using materials collected and salvaged from the local area.

Please refer to page 23 for pricing details.



ESTATE AT CHAPEL FARM

CHURCH BARN RECEPTION

On the banks of the brook that flows through the centre of our property, nestled between our vineyards, you will find Estate at Chapel Farm. Built from the bones of the original winery founded in the early 1900's, we have repurposed recycled materials to encapsulate the history of the estate - including one of the original fermentation tanks. Jane Brook deck provides a view over our back block vineyard and the brook that flows during wet season.

The Church Barn at Estate at Chapel Farm can facilitate seated weddings of up to 300 guests. It offers fully and semi-enclosed options, with air-conditioning to help keep you cool in the summer months and open fires to keep you warm in the winter months. The Church Barn is home to our impressive 300 litre distillery, brewery and winery. Complimentary fairy and festoon lighting is included to enhance the atmosphere on your special day.

ESTATE AT CHAPEL FARM



VIGNACOURT GARDENS

Ceremony / Canapes & Pre Dinner Drinks

Vignacourt – or ‘place of the vines’.
Our Estate was one of the first WA growers to pack table grapes in sawdust and send them to London by ship. The first vines were planted in the early 1900's. The property's original name, before Jane Brook Estate was Vignacourt Vineyard. Our garden among the vines is an ode to its rich history and bloody good wine.

Please refer to page 5 for pricing details.



JANE BROOK DECK

Ceremony Area

Overlooking our whimsical vineyards and a stones throw away from the brook running through the centre of our property; the elevated deck provides a romantically shaded location to tie the knot. Exclusive bar available to service your guests both before and after your ceremony.

Please refer to page 5 for pricing details.



CHAPEL LANE

Ceremony Area

Walk above our Jane Brook creek on an elevated walkway, 100 meters in length, across to our back block vineyards. This location overlooks a glistening lake nestled quietly among the grapevines. Perfect for an intimate ceremony in front of our chapel.

Please refer to page 5 for pricing details.



THE CHURCH BARN

Main Reception Area

Built using salvaged, collected and procured materials including stained glass windows from a 200 year old cathedral, the Church Barn has a seated capacity of 300 guests. Home to our Brewery, Distillery and our Winery showcasing premium West Australian produce.

Please refer page 23 for pricing details.

CATERING



We provide bloody good food for you and your guests to indulge in.

Our menu selections are designed to evoke the warmth of enjoying good food with friends and family. Everything tastes so much better when you know and appreciate the hard work, patience, and care that went into creating it.

Our main focus is fresh local produce. For that reason we update our menu selection to showcase what is in season. Please ask your wedding coordinator to view our current menu.

Chapel Farm Estate is aware that some of your guests may have specific dietary requirements. Not to worry, we've got you covered! All we ask, is that 28 days prior to your wedding date, all dietary information is confirmed. We can then ensure that alternate meals are provided, to suit each guests requirements.

While every effort is made to provide the advertised meal options for your event, menus are subject to change based on seasonality and unforeseen circumstances. Should this be the case the substituted item will be replaced by an item of greater value at no additional charge.

For more information regarding additions and menu substitutions please ask our team to view our current seasonal menu selection.

Kids Meals

Children under 12 years old eat from our kids menu from \$35 per child.

OUR OFFERING

*Please note that all adult guests must be on the same package



THE RELAXED EVENT

Served canape style | From \$89 per person

TO BEGIN

Grazing Table
Laden with cured meats, cheeses, fruit, dips & bread.

THE MAINS

Your choice of 8 canapes from our seasonal menu, followed by wood fired pizzas ensuring there is plenty for everyone.

TO INDULGE

Your wedding cake.



THE BANQUET

All served to your table | From \$92 per person

TO BEGIN

Grazing Table
Laden with cured meats, cheeses, fruit, dips & bread.

THE MAINS

Your choice of two mains and one salad served with a selection of side dishes.

TO INDULGE

Your wedding cake.



THE FEAST

Served Buffet Style | From \$95 per person

TO BEGIN

Grazing Table
Laden with cured meats, cheeses, fruit, dips & bread.

THE MAINS

Your choice of three main and three side options from our seasonal feast menu.

TO INDULGE

Your wedding cake.



THE MAIN EVENT

Alternate drop | From \$108 per person

TO BEGIN

Your selection of two canapes from our seasonal canape menu.

THE MAINS

Cured meats house bread, olives, olive oil.
Your choice of two main course options from our seasonal set menu.

TO INDULGE

Your wedding cake.
Selection of Cheese & sliced fruit.

BEVERAGES



Our range of premium free flow beverage packages.

From our heart and home in the Swan Valley, we are thrilled to offer a range of Chapel Farm Estate brewed beers, premium wines from grapes picked from our own vine-yards, and spirits distilled in our impressive 300-litre copper still.

Our signature and classic cocktail menu (available upon request) is designed to showcase premium ingredients and take advantage of our collection of over 500 spirits.

We offer a large selection of home-grown, local and international Wines, Spirits, Beers, and Ciders.

All beverage packages include tea, coffee, and non alcoholic options throughout the duration of your free flow schedule. Beverages not included in your free flow beverage package or bar tab remain available for guests to purchase.

A minimum four hour beverage package is required for all adult guests, commencing from the reception start time. Packages can then be extended per hour.

Chapel Farm Estate is a responsible provider of alcohol, and, as such, staff reserve the right to refuse alcohol service to patrons (including private function guests) at their discretion. Both our venues are fully licensed from 10:00am until 12:00am. BYO is not permitted.

ADDITIONAL EXTRAS

Bad Donkey Ginger Beer

Old Soul Hard Lemon

Holy Water Vodka Seltzer (Seasonal)

Add 1 for \$3| Add 2 for \$5| Add 3 for \$7

Bubbles For Toasting

Sparkling Wine | from \$15pp

Sparkling Gold Bubbly Tower

3 - 5 tier tower | from \$20pp

Minor Drink Package (18 and under)

4 hour Free flow | \$22 pp | Additional hours \$7

Bridal Esky

Portable cooler for drinks during photos | \$15 per person in the Bridal Party

Cocktail Confessions Cart - please refer to page 17.

BEVERAGE PACKAGES

*Please note that all guests 18+ must be on the same package



FLAME TREE PACKAGE

4 hour free flow \$50pp | Additional hours \$14pp

Estate Temple Range

Red, White, Rose, Moscato, Chardonnay, Sparkling White & Sparkling Rose

On Tap

Holy Goat Lager, Golden Child Mid Summer Ale & 1 Cider on tap



EUCALYPTUS PACKAGE

4 hour free flow \$54pp | Additional hours \$15pp

Estate Temple Range

Red, White, Rose, Moscato, Chardonnay, Sparkling White & Sparkling Rose

On Tap

Single Fin, Golden Child, Holy Goat Lager, Genesis, All Hail, Chapel Apple, Alby Draft, Alby Crisp

Bottled

All Beers and Ciders \$9 & below



WHITE MYRTLE PACKAGE

4 hour free flow \$62pp | Additional hours \$17pp

All Wines by the glass

All Bubbles by the glass \$11 & below

On Tap

Single Fin, Golden Child, Holy Goat Lager, Genesis, All Hail Pale Ale, Chapel Apple, Alby Draught, Alby Crisp, Judgement Juice, Seasonal Guest beer

Bottled

All Beers & Ciders by the bottle \$11 & below

*Upgrade - Prosecco +\$3pp



SUGAR GUM PACKAGE

4 hour free flow \$76pp | Additional hours \$20pp

All Spirits \$12 & below

(excluding shots, pre-mixers & cocktails)

All Wines by the glass

All Bubbles by the glass

All Boutique Beers on tap

All Beers by the bottle

All Ciders by the bottle

NON-ALCOHOLIC DRINKS PACKAGE AVAILABLE

4 hour free flow | \$30 per person

Additional hours | \$8 per person

Soft drink, fruit juice, tea & coffee

ADDITIONAL EXTRAS

ROUND TABLES

Upgrade your tables to our solid wood round banquet tables. Sized perfectly 1.6m and 2m (seats 8-10).
\$14 per table



WHITE WASH TIFFANY CHAIRS

Change the feel of your ceremony and reception.
\$6 per chair



WINE BARRELS

Wine barrel hire makes for great bar tables, cake stands and look fabulous with a couple of metal bar stools accompanying them for extra seating.
\$10 per barrel, stools included



COLOURED NAPKINS

Change the feel of your ceremony and reception. We have a wide range of colours to choose from.
\$3 per napkin



ADDITIONAL EXTRAS

HOLY ROLLY ICECREAM

Made by pouring our home made icecream base onto a cold plate, you create the rolled Ice Cream you want to eat in a variety of flavours. It's fun. It's decadent and it's available for hire for \$500 for 2 hours and an additional \$100 per hour thereafter.



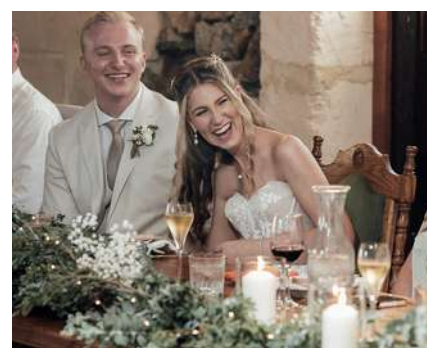
LIGHT UP LOVE LETTERS

Our Love Letters are subject to availability and are a GLOWING addition to your special day. Choose from our **white or rustic** letters, both at a showstopping 1.5m tall and available to hire from us at a rate of \$300 per set.



BRIDAL PARTY CHAIRS

Our wooden throne chairs with sage green cushions are the perfect way to elevate the look of your bridal table. \$10 per chair



WHITE MOON ARBOUR

A unique bespoke piece that creates a fairytale ceremony backdrop. \$150



WILD WOOD ARBOUR

A bespoke round arbour made of twisted twigs creating a whimsical ceremony backdrop. \$300



EVENT STAGE

Perfect to elevate your wedding. Suitable for bridal table, podiums, live entertainment and more. From \$500



CONFESSIONAL PHOTOBOOTH



THE ESTATES IN HOUSE PHOTO BOOTH

Our Confessional Photo Booth is a must have at your wedding to bring an element of excitement to your special day.

Have fun, get everyone involved and create special memories with the two instant print outs of every 4 picture set, download the GIF immediately to your phone or email and receive a full file of all of the images created after your event.

The Confessional Photo Booth is located at The Estate at Chapel Farm and is available to hire from us at a rate of \$650 for 4 hours.

Extended hours available for an additional charge.

To hire the Confessional Photo Booth please talk to your wedding coordinator or email us at weddings@chapel farm.com.au

*available at The Estate at Chapel Farm only.

COCKTAIL CONFESSIONS CART



ON TAP COCKTAILS FOR YOUR GUESTS

Our Confessional Cocktail Cart is here to absolve your thirst with heavenly handcrafted cocktails! Whether you're confessing to a love of mojitos or seeking salvation in a caprioska, our roaming sanctuary of spirits is your one-stop shop for liquid blessings.

Set up separate from the main bar, and featuring seasonal cocktails on tap such as mojito, espresso martini, strawberry lime caprioska and yuzu gin crush, the Confessional Cocktail Cart adds an element of fun and variety to your celebration.

Minimum spend \$750 for 50 x cocktails. \$15 per cocktail thereafter.

LOUNGE SETS



FRENCH ROSE



LADY IN RED



DAMASK



CHAI LATTE

OUR 4 LOUNGE SETS FOR HIRE

Our vintage velvet lounge sets; Damask, Lady in Red, Chai Latte and French Rose. Each setting is made up of a three seater lounge and 2-4 single arm chairs.

Our Damask lounge set has an elegant magenta fabric, our Lady in Red comes in a deep red, Chai Latte is soft cream and French Rose a soft rosy colour. Each set has a detailed buttoned back adding to their beauty.

Coffee table and rug are subject to availability.

These lounges are perfect for a sophisticated cocktail hour. Available to hire from us at a rate of \$300 for the day.

To hire one of our lounge sets please talk to your wedding coordinator or email us at weddings@chapelfarm.com.au

BRIDAL BOUDOIRS



ESTATE BOUDOIR

Designed with space and comfort in mind, our Estate Boudoir is the perfect "get ready" room for your big day.

With two makeup & hair stations, full size mirrors, private courtyard and bar fridge, you can sip champagne surrounded by your people as you get pampered up by your hair & makeup artists under our chandelier lit ceiling.

Located at Estate at Chapel Farm for our Estate Wedding Parties.

FARM BOUDOIR

Our Farm Boudoir is an open plan "get ready" room overlooking our property.

With two makeup & hair stations, full size mirrors, courtyard and bar fridge, you can sip champagne surrounded by your people as you get pampered up by your hair & makeup artists under our chandelier lit ceiling, all while our Alpaca wingmen watch on from their pastures as you get ready.

Located at Chapel Farm for our Chapel Farm Wedding Parties.

Please visit www.chapelfarm.com.au for rates and further information.

ACCOMMODATION



Stay with us on the Farm.

Chapel Farm Getaways is situated in the centre of our 20.5 acre property. Nestled between both venues, the Getaways offers an escape for both before and after your event. There is a jockeys house turned Bush Shack, a fully self contained unit that sleeps up to 6 guests. Once horse stables, we have transformed these into six individually themed units each designed for two guests. All accommodation has a private bathroom, lounge, smart TV, a bar fridge along with coffee and tea making. All accommodation guests have access to our pool and BBQ facilities however access to outdoor facilities is limited in off peak season.

Due to the high demand for our accommodation we recommend you book as soon as possible to avoid disappointment. Regretfully, staying with us on the farm may not be possible for your wedding based on limited availability and prior bookings.

For more information, rates, availability or to book accommodation please email stay@chapel farm.com.au

ACCOMMODATION

-CHAPEL FARM GETAWAYS -

BUSH SHACK (SELF CONTAINED UNIT)

THE STABLES PRIVATE UNIT | MAX TWO GUESTS

-THE ESTATE -

VIGNACOURT VILLA

JANE BROOK ESTATE POOL VILLA

Please visit
www.chapelfarm.com.au
 for rates and further
 information.

VENDORS



OUR PERSONAL FAVOURITES!

It can be difficult and often overwhelming when it comes to booking vendors and suppliers. We have provided you with a few of our personal favourite, go-to people in the industry.

All vendors/suppliers not listed below are required to provide all relevant information, including public liability insurance, and certificate of currency regarding the service they intend to provide. For all of preferred suppliers we have taken care of gathering this information for you. This is for your own peace of mind and to ensure your day runs as smoothly as possible.

All live entertainment for your reception including DJ's must be named on our preferred vendors list below. Bands are not permitted at Chapel Farm however they may be accepted at The Estate. Please contact our weddings team prior to booking bands to avoid disappointment as this is strictly based on application for The Estate at Chapel Farm only.

Our preferred vendors are supplied complimentary catering and non alcoholic beverages. All other vendors/suppliers attending your reception that are not listed below are charged a flat rate of \$70 per person for a main meal and free flow non-alcoholic beverages valid for the duration of the event.

VENDORS



Affair with Flair
Florist, Decorator & Stylist
www.affairwithflair.com.au



Tammy Wood
Marriage and Funeral Celebrant
www.tammywood.com.au



Debbie Gibson
Registered Marriage Celebrant
tlccivilceremonies@gmail.com



Mark Kenny
Marriage Celebrant
www.markkennycelebrations.com.au



Off The Wall Promotions
Entertainment Specialist
www.offthewallpromotions.com.au



Jamie Hall
Live Music
www.jamiehallmusic.com



Wedding Music Perth
Live music/DJ/MC packages
www.weddingmusicperth.net



Fiona Rea Music
Live Music & Reception Packages
www.fionareamusic.com



Reilly Craig
Live Music & DJ
www.reillycraigmusiclive.com



Phillip Clair Entertainment
DJ and MC
www.djphileinet.net.au



DJ Poz
Perth's Wedding DJ
www.djpoz.com.au



Jack In The Box
Photographer
jackintheboxphotography@outlook.com

VENDORS



Jacqueline Jane Photography
Photographer

www.jacquelinejane.com.au



Tonita Photo and Video
Photography and Video

tonitaphotography@bigpond.com



Fox and Wildling Photography
Wedding & lifestyle photographer

www.foxandwildling.com



Over The Moon Events
High Quality Event Furniture

www.overthemoonevents.com.au



Heart Strings Hire & Style
Wedding & event furniture hire

www.heartstringshireandstyle.com.au



Black Label Events
Event Furniture Hire

www.blacklabelevents.com.au



Harvest Style
Bespoke Furniture & Styling

www.instagram.com/harvesthirestyle



Spoilt Photo Booths
Photo Booth Supplier

www.spoiltphotoboosts.com.au



A Touch of Blue
Custom Signage & Hire

atouchofblue.weddingsignse@gmail.com



Robyn's Creative Cakes
Wedding Cakes

www.robynscakes.com



Allure Limousines
Wedding car hire

enquiries@allurelimousines.com.au



Perth Garden Games
Lawn Game Hire

www.perthgardengames.com

FINER DETAILS

Minimum Spend & Exclusive Area Hire

1. EXCLUSIVE AREA HIRE

Exclusive area hire charges are inclusive of service staff, set-up (as discussed with your Wedding Coordinator) and pack down of your wedding; current glassware, cutlery and crockery, white linen napkins, fairy lights are also included by default. A \$1,500 fee applies for the cost of removing and rehangng lights if these are not required. Should the weather be inclement or unpredictable, Chapel Farm Estates' Wedding Coordinator will cooperate with the wedding couple to make the decision on whether to move the outdoor ceremony to a more suitable, weather-protected area. Inclement weather options will be discussed prior to the wedding date.

- Exclusive area hire is valid from 4.00pm onwards provided your ceremony is held at Chapel Farm Estate.
- For Receptions only, area hire is valid from 5.00pm onward.
- Additional hours prior to these times is charged at a flat rate of \$500 per hour or part thereof.
- Access required after 12:00am for vendor/equipment & removal of hired items is charged at a flat rate of \$100 per hour or part thereof.
- For morning, mid day and afternoon receptions please speak to your wedding coordinator as additional charges may apply.

ESTATE AT CHAPEL FARM

*The Church Barn, Jane Brook Deck, Vignacourt Garden's and Chapel Lane * Available 2024*
(229 Toodyay Road, Middle Swan, Western Australia)

Exclusive Area/Venue Hire fees are as follows:

Evening hire | 4:00pm - 12:00am (midnight)
Friday | \$1,800
Saturday | \$2,200
Sunday | \$1,900
Mid week | \$1,500
New Years Eve | \$4,000
Public holidays | \$3,000

CHAPEL FARM

The Courtyard, Lake, Waterfall Area, Chapel and Presbytery
(231 Toodyay Road, Middle Swan, Western Australia)

Exclusive Area/Venue Hire fees are as follows:

Evening hire | 4:00pm - 12:00am (midnight)
Friday | \$1,200
Saturday | \$1,500
Sunday | \$1,200
Mid week | \$1,000
New Years Eve | \$3,000
Public holidays | \$2,000

2. MINIMUM SPEND

The required minimum spend applies to food and beverage packages and food & beverage hire items only (Holy Roly, Cocktail Confessions Cart) and must include one catering package and one beverage package. If the full amount is not utilized at the conclusion of your event, the remainder will be forfeited. Ceremony fees, accommodation, venue hire and other item hire is not included in the minimum spend.

ESTATE AT CHAPEL FARM

*The Church Barn, Jane Brook Deck, Vignacourt Garden's and Chapel Lane * Available 2024*

(229 Toodyay Road, Middle Swan, Western Australia)

Peak season (September - May, excluding Fridays & Saturdays in December)

Friday | \$12,000
Saturday | \$14,000
Sunday | \$13,000
New Years Eve | \$18,000

Off peak season (June - August)

Friday | \$7,500
Saturday | \$9,500
Sunday | \$8,500

Public holidays

All public holidays | \$14,000
Please note a 20% surcharge will apply to the total cost of your wedding.

All year (Monday - Thursday)

MID WEEK | \$7,000

24th November through to 24th December

Friday | \$20,000
Saturday | \$22,000

CHAPEL FARM

The Courtyard, Lake, Waterfall Area, Chapel and Presbytery
(231 Toodyay Road, Middle Swan, Western Australia)

Peak season (September - May, excluding Fridays & Saturdays in December)

Friday | \$10,000
Saturday | \$12,500
Sunday | \$11,000
New Years Eve | \$15,000

Off peak season (June - August)

Friday | \$6,500
Saturday | \$8,000
Sunday | \$7,500

Public holidays

All public holidays | \$12,500
Please note a 20% surcharge will apply to the total cost of your wedding.

All year (Monday - Thursday)

MID WEEK | \$6,000

24th November through to 24th December

Friday | \$15,000
Saturday | \$17,000

FINER DETAILS

Terms & Conditions

3. BOOKING YOUR EVENT

Tentative bookings at your preferred venue will be held for 7 days, the booking will be automatically cancelled unless arrangements have been made to secure your date or extend the tentative booking. To secure your date and venue, a **non-refundable** deposit of the venue hire for your chosen day must be paid/submitted with a signed agreement before Chapel Farm Estate will officially confirm the booking. By submitting the deposit you are agreeing to the terms and conditions form provided to you.

4. PAYMENT

All details are to be finalised 28 days prior to your wedding date, this includes final numbers and dietary requirements. Should guest numbers be reduced on the day, you will be charged the fee as confirmed 28 days prior. Additional fees will apply for increased guest numbers requested within 28 days of your wedding date. Once the initial deposit has been paid, 100% of your minimum spend is required to be paid no later than 3 months (90 days) prior to your wedding date. Payments that are made later than 14 days after the due date without prior permission from Chapel Farm Estate will incur a \$10 administration fee charged daily, from the 15th day to the date the payment is made. Failure to make the required payments 60 days past the due date without prior permission from Chapel Farm Estate will result in cancellation of your wedding and forfeiture of any payments made.

The following is a required non-refundable milestone payment plan;

50% of your minimum spend is required to be paid no later than 12 months prior to your wedding date.
75% of your minimum spend is required to be paid no later than 6 months prior to your wedding date.
100% of your minimum spend is required to be paid no later than 3 months prior to your wedding date.

A final payment will include all money owing above the minimum spend and is based on all final arrangements made with the Wedding Coordinator. This final payment is due 21 working days prior to the wedding date. Master Card & Visa Cards are accepted for wedding payments and incur a 2.2% processing fee. Regrettably, American Express and Diners Club cards are not accepted. Should you wish to set up a payment plan please discuss this with our Wedding Coordinator.

5. BOND & LIABILITY

The Bride/Groom will be financially responsible for any damage to the property, function room facilities, equipment, fittings or surrounds caused by guests (including vendors) to Chapel Farm Estate. A \$500 bond will be included in your final invoice to cover any costs that may be incurred. An additional invoice will be issued if the amount exceeds \$500. Chapel Farm Estate is always extremely careful when looking after patrons and their belongings, however the Company accepts no responsibility for the damage or loss of merchandise on our premises prior to, during or after your wedding. Chapel Farm Estate recommends organisers arrange insurance independently. Any items left on site will be disposed of after 7 days, unless prior arrangement have been made. The bond (less any outstanding costs incurred) will be refunded within 21 days of your wedding.

Ceremony location is to be nominated in advance of the day. In the event of inclement weather, your ceremony set up can be relocated up to 1 hour prior to your ceremony commencement time. If you request the ceremony be relocated within 1 hour of your ceremony commencement time, a \$200 fee will apply, deducted from your bond

6. PRICING AND QUOTATIONS

Prices and menus are current and accurate at the time of provision. Please note all prices are subject to change without notice due to market variations. The parties agree that every cost, expense, charge, fee, outgoing or contribution referred to in this wedding guide as a fixed amount can be subject to approximate increases in accordance with the CPI increase on 1 July in each year. Our menus change seasonally with current trends. Our wedding package is also reviewed and updated annually. All prices are inclusive of GST. Your final invoice will reflect updated pricing relevant to the year of your wedding date. We cannot guarantee that fees will reflect the pricing information provided at the time of your booking, particularly when made more than a year in advance. Chapel Farm Estate aims to inform and discuss any significant changes with you within a reasonable time frame. Our pricing is based on bar service for beverages. Should table service be required additional fees will apply.

7. POSTPONING YOUR EVENT

A change of date/postponement will be considered a new booking and new deposits & payment plans will apply as per the terms & conditions of Chapel Farm Estate's wedding booking agreement. A change of date is up to the discretion of Chapel Farm Estate. All postponements & date changes must be provided be in writing. Please ensure you receive confirmation of this postponement/date change in writing from Chapel Farm Estate. Upon confirmation, all existing terms & conditions are redundant. A new date must be confirmed within 12 months from the date of postponement and a new booking agreement will be required to be signed upon confirmation of your new date. It is the responsibility of the client to contact Chapel Farm Estate with a new date preference.

For bookings that are greater than 12 months from the original booking date, a new deposit will be required to secure your new date and new minimum spend payment plan will apply. Should you move your date to a higher or lower minimum spend, the greater of the two will apply. The deposit from your original date can be utilised to contribute to the total cost of your wedding outside of minimum spend requirements.

For bookings between 3 months & 12 months from the original booked date, a new deposit will be required to secure your new date and new minimum spend payment plan will apply. Any minimum spend payments made for the original booked date cannot be transferred to meet new minimum spend payments, however can be utilised to contribute to the total cost of your wedding outside of minimum spend requirements.

Bookings less than 3 months from the original booked date cannot be postponed and will be treated as a cancellation.

FINER DETAILS

Terms & Conditions

8. CANCELLING YOUR EVENT

1) Termination by Chapel Farm Estate

Chapel Farm Estate reserves the right to terminate this agreement in the event of:

- The Client fails to provide the Venue with clear or consistent instructions required for the Venue to successfully execute the wedding.
- Failure to meet the obligations under clause 4, section of this contract; "Payment".
- There is a clear loss of trust and/or confidence between the Client and Chapel Farm Estate
- In the event of Force Majeure, and the standards provided within section 3 of this clause.

It is at the discretion of Chapel Farm Estate to offer refund of any monies paid in the event of termination for the above reason subject to date of the wedding, work already completed by Chapel Farm Estate including, but not limited to, pre-wedding communications, development of timelines, and preparation of equipment and other reasonable costs incurred due to termination. If the Venue terminates this agreement, Chapel Farm Estate must notify the Client in writing.

2) Cancellation by Client

All cancellations must be received in writing to Chapel Farm Estate. Please ensure you have received confirmation of your cancellation via email. All deposits & milestone payments are strictly non-refundable and the bride/groom will not be entitled to any refund of the deposits or milestone payments.

3) Force Majeure

If Chapel Farm Estate cannot hold the wedding or believes it may not be able to perform this Agreement in whole or in part due to a fire, natural disaster, act of war or terrorism (domestic or foreign), epidemic or pandemic (including COVID-19), action of any governmental authority (including a Government Order) national or regional emergency, other casualty, act of God, or other cause beyond the control of the Venue, whether or not foreseeable ("Force Majeure Event"), then Chapel Farm Estate will give notice to the Client as soon as reasonably practicable after the venue determines that a Force Majeure Event will or may prevent the venue from performing under this Agreement. Chapel Farm Estate shall have no liability for delays or failures to perform due to a Force Majeure Event, but will work with the Client to find an alternative date for the Event that is suitable to both Client and the Venue. Chapel Farm Estate may also, in its sole discretion, refund fees paid to the Venue under the Agreement, less any amounts necessary to cover expenses and work (based on time spent by the Venue) already performed by Chapel Farm Estate relating to the Event, including, but not limited to, pre-wedding communications, development of timelines, and preparation of equipment for the Event if a suitable date between both the Venue & the Client is unattainable.

Subsequently, should Chapel Farm Estate be able to provide the agreed service and you choose to cancel or reschedule your event, due to personal reasons/choices, this is considered a cancellation or postponement and is treated as such.

In the case of a Force Majeure Event, Chapel Farm Estate shall have no additional liability to Client with respect to this Agreement beyond that described in this Section.

The Client understands that Chapel Farm Estate works to maintain a safe work environment, including but not limited to, complying with applicable governmental laws, directives, orders, and regulations (each a "Governmental Order"). The client further understands and agrees that Chapel Farm Estate shall not be required to perform under this Agreement if the Event is held in violation of a Governmental Order or the venues participation in the Event would violate a Governmental Order

9. BEVERAGE CONDITIONS

All beverage menus and items are subject to availability and subject to change. While we endeavour to provide the advertised beverage options on the day of the event, menus cannot be guaranteed due to seasonal, yearly changes or unforeseen circumstances. Guests will be served the selection of drinks chosen by the Bride/Groom.

Hire of the Cocktail Cart and associated costs are to be agreed in advance. Due to preparation of required ingredients for the agreed volume, unused cocktails will be forfeited.

The Bride/Groom will be responsible for payment of all these beverages. The Bride/Groom are not permitted to supply their own beverages, as this is an infringement of venue licensing regulations. Gifts of alcohol presented must remain sealed whilst on the premises; including purchased items supplied by Chapel Farm Estate. Beverages are available on a set package. On consumption bar tabs can be added in addition to the Beverage Package. If this is added, a prepayment of \$30 per person is required. Credit card details will be held on file. In the case of the beverage total exceeding the prepayment amount, the card on file will be charged at the end of your function. The bond cannot be released to deduct any outstanding beverage costs.

All wines are subject to vintage availability. Chapel Farm Estate reserves the right to amend beverage selections.

10. RESPONSIBLE SERVICE OF ALCOHOL

Chapel Farm Estate is a responsible purveyor of alcohol, and, as such, staff reserve the right to refuse alcohol service to patrons (including private function guests) at their discretion. Under absolutely no circumstance may any person under 18 years of age consume alcohol on licensed premises. Please advise attending guests that proof of age ID may be requested and failure to provide identification will result in no-beverage service. Persons under 18 years of age must be accompanied by their legal guardian at all times. Chapel Farm Estate will not serve alcoholic beverages to intoxicated guests and reserve the right to remove any patron from the premises.

Our venue is fully licensed from 10:00am until 12:00am. BYO is not permitted.

FINER DETAILS

Terms & Conditions

11. CATERING & DIETARY REQUIREMENTS

Dietary requirements must be confirmed 28 days prior to your wedding. Following this period, alternate meal options requested by/for guests (i.e. differing from the final confirmation), will incur a charge equivalent to the full catering fee for an additional guest. Chapel Farm Estate reserves the right to deduct this from the bond. This is to cover the loss and wastage of food and the alternate meal provided. All catering menus and items are subject to availability and subject to change. While every effort is made to provide the advertised meal options on the day of the event, menus cannot be guaranteed due to seasonal, yearly changes or unforeseen circumstances.

12. ACCOMMODATION

Due to the high demand for our accommodation we recommend you book as soon as possible to avoid disappointment. Regretfully, staying with us on the farm may not be possible for your event based on limited availability and prior bookings. For more information, availability or to book all accommodation please email stay@chapel farm.com.au

Damage to accommodation premises occurring during you and/or your guests' stay at Chapel Farm Getaways will result in a deduction from your bond, or provision of a separate invoice (should the damage exceed the bond held). Please note, bond deductions will only occur if the individual guests Responsible for damage refuse to take financial responsibility.

13. LIVE MUSIC + ENTERTAINMENT

Chapel Farm Estate endeavours to assist all live entertainment in minimizing noise exposure with-in a licensed venue. In compliance with the legal requirements of the occupation health and safety act, the liquor licencing act and regulations regarding the reduction of noise emissions and its potential impact on the local community.

All artists and providers of live entertainment at Chapel Farm Estate are required to assist in maintaining noise pollution by liaising with management regarding;

- Set up location
- Maximum noise level
- Bass output
- Microphone levels
- No Bands (Unless approved by CFE)
- Finish times (Bands- 11:00pm) (All other live entertainment artists- 12:00am)
- Housekeeping announcements (MC)

This application is mandatory and you must book from our list of preferred vendors for all live entertainment including DJ and approval is required by Chapel Farm Estate. Please contact the Wedding Coordinator via email before booking live entertainment to avoid disappointment.

Once approved all entertainment must strictly adhere to this compliance agreement and the direction of Chapel Farm Estate management. Failure to comply with the agreed terms will result in deductions from the bond held and entertainment will immediately cease and be replaced with house music. Entertainers are not to consume alcoholic beverages whilst working at Chapel Farm Estate.

14. DECOR

Chapel Farm Estate will assist in setting up your supplied decorations free of charge, however please provide your Wedding Coordinator with clear detailed instructions and photographs. Decoration set-up requiring significant time and/or skill (e.g. require to be hung or assembled) attract a fee of \$75.00 per hour, which will be deducted from your bond after the first half an hour.

Name tags or specific items must be separated into tables and price tags/stickers must be removed from all decorations prior to drop-off. Batteries must be installed and additional batteries must be supplied if required. Candles must be of high quality and used in conjunction with a candle jar/holder/base. Nothing is to be nailed, screwed, stapled or adhered to any wall, door or surface of the venue. Confetti, glitter, party poppers, synthetic flower petals, coloured streamers and rice are not permitted anywhere within the buildings or grounds. Natural flower petals dried/fresh and leaves are accepted. Unless prior arrangements have been made, any decorative items left behind by bride/groom or relatives must be collected within 7 days. Chapel Farm Estate will not be held liable for items left post-event and reserves the right to charge a disposal fee.

15. VENDORS + SUPPLIERS

Early access to the venue is at the discretion of the Wedding Coordinator and applies to suppliers, bride, groom or relatives for the setup of any wedding items. At this time, set up of the venue will be incomplete and detailing is always scheduled for the day of the event. Chapel Farm Estate must be advised of all additional equipment and/or items hired via external vendors/suppliers. All Items being delivered on behalf of the Bride/Groom must be boxed and labelled with the function name clearly marked.

Drop off/Pick-up times must be arranged with the Chapel Farm Estate Wedding Coordinator. Although all efforts are taken, Chapel Farm Estate cannot take responsibility for lost or damaged goods. All suppliers must be fully set up 1 hour prior to the commencement of your ceremony/reception. Items supplied by external hire companies must be picked up between 9:00am and 10:45am the day after your wedding. Any items left behind by suppliers/vendors/guests will be disposed of after 7 days. Chapel Farm Estate will not be held liable for items left post event and reserves the right to charge a disposal fee.

16. EVENT SPECIFICS

Arrival time stated on invite: 4:00pm*
 Ceremony time stated on invite: 4:15pm *
 Reception time stated on invite: 6:00pm*
 Reception concludes: 12:00am**

*Default times are stated. If alternate times are preferred this is by application only. To request any amendments to this schedule, please put this in writing to weddings@chapel farm.com.au

Chapel Farm Estate reserves the right to decline changes.

Please note a change of time may incur additional charges



**CHAPEL
FARM**

ESTATE
EST. 1905
SWAN VALLEY
WESTERN AUSTRALIA

CHAPEL FARM ESTATE

229-231 Toodyay Rd, Middle Swan,
Western Australia, 6056



(08) 62 226 695



weddings@chapelfarm.com.au



www.chapelfarm.com.au



Instagram.com/chapelfarm.estate.weddings



Facebook.com/chapelfarmswanvalley