



THE VENUE

eSpace resides in a unique heritage-listed venue in the heart of Brisbane - our exclusive location just a 2-minute stroll from Howard Smith Wharves.

Originally constructed in 1919, for prominent tea merchants Inglis LTD this 5-storey masonry warehouse and office building remains true to its original character.

Our private venue (guaranteed no intrusions!) is in a unique, open-plan space in a historical gem of a building. Our event Space will surely wow your guests – with a fully-stocked bar, cozy seating nooks, and a spacious, industrial design perfect for all events.

eSpace is the premier event venue in Brisbane, offering a versatile space for private and corporate functions from 40 to 120 guests. Our exclusive location, modern design, and experienced event professionals provide bespoke packages tailored to your needs. Book eSpace for a truly unforgettable event.

VENUE HIRE

Capacity: 120 pax standing & 60 seated

Furniture:

6 bar tables + 18 stools

3-seater yellow couch

5-seater charcoal corner couch

1-seater cane armchair

Assorted cushions and ottomans

AV:

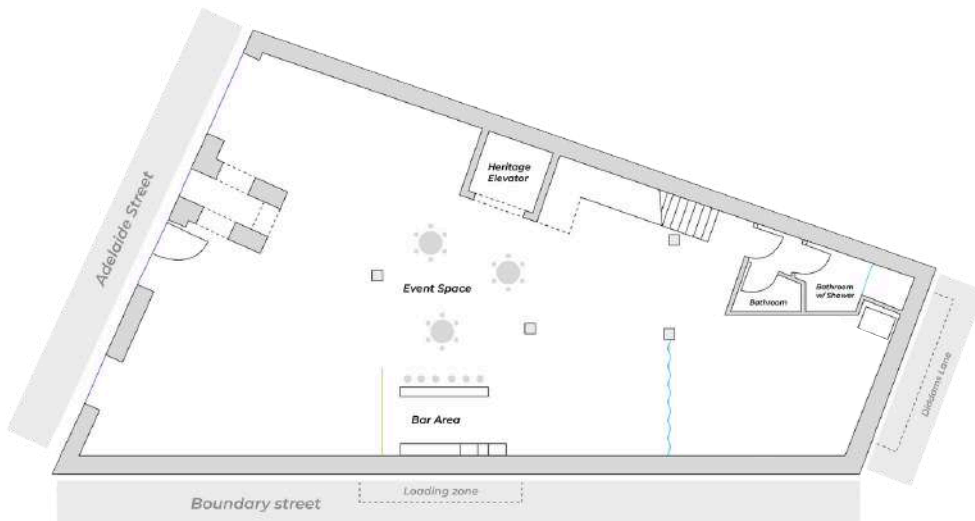
Surround sound speakers

Speaker and Bluetooth Party Microphone

TV screen (HDMI & USB connection)

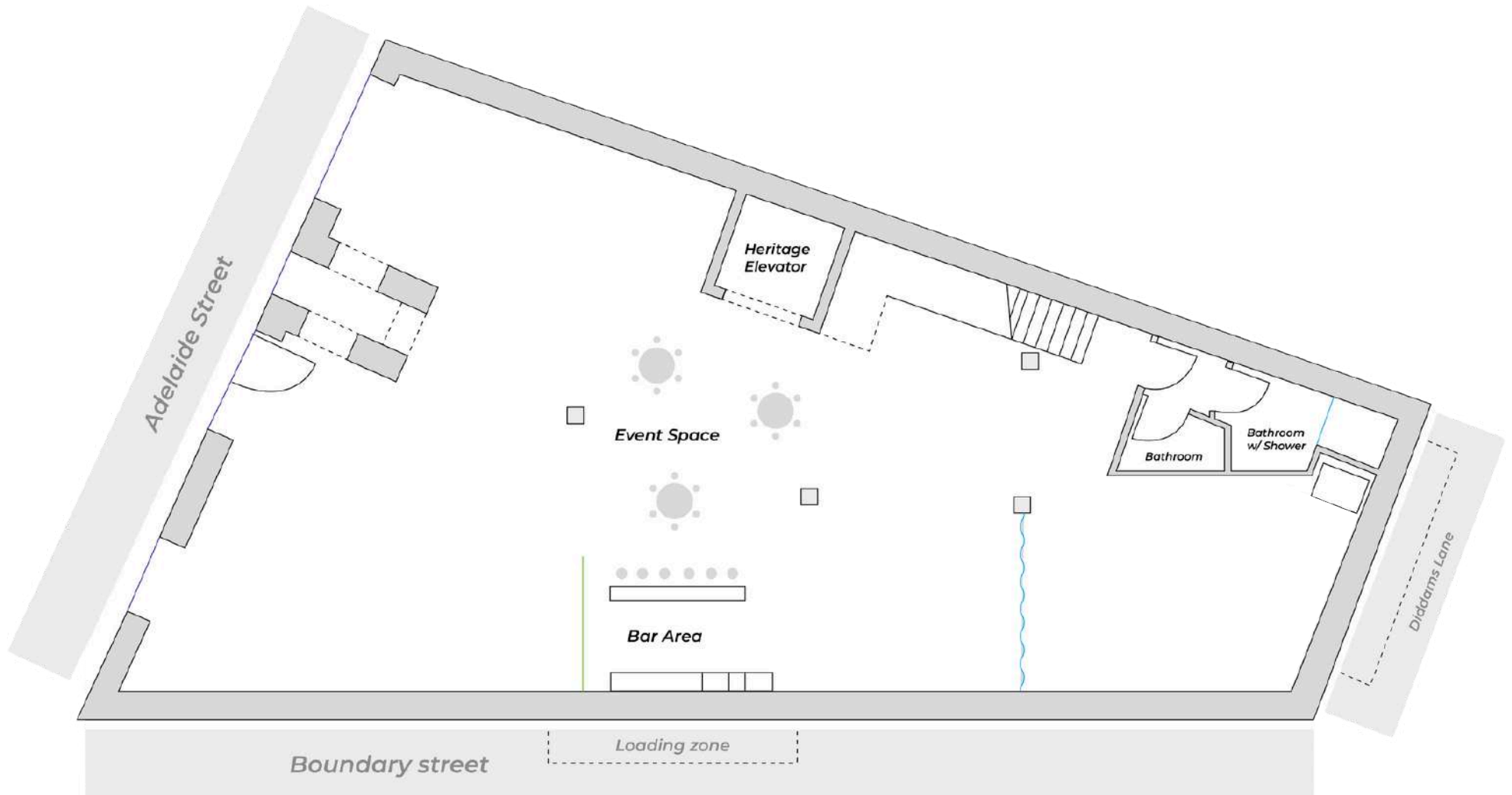
4 uplights (bar use only)

Amenities include: Private bar, Dance floor , unisex 2 bathrooms & single shower





FLOOR PLAN





Inclusions

- Exclusive venue hire for 4 hours, additional hour for \$300.
- All onsite furniture
- On-the-day coordination with your event coordinator
- Bar service staff

	Weekdays	Fri	Sat	Nov-Dec
Venue hire	\$900	\$1,100	\$1,300	+ \$700
Min. Bar Spend	\$1,500	\$2,000	\$2,000	+ \$1,500

Public Holidays Pricing and availability are subject to change. All prices inc. GST



BEVERAGE PACKAGES

Choose from our premium beverage packages, including unlimited beer, wine and soft drinks.

	Silver	Gold
3-hour package	\$55	\$65
4-hour package	\$60	\$70

What's included: Silver Package

BTW Prosecco
BTW Sauvignon Blanc
BTW Pinot Grigio
BTW Pinot Noir

Two Local beer options
One international beer
Somersby Apple cider

What's included: Gold Package

In addition to what's included in the silver package, you're able to choose 2 premium wines and 2 additional beers from the below list.

Fantini Cerasuolo D'abruzzo Rosè 2021
Pinot Grigio Delle Venezie 2021
M by Mandala Sparkling

Corona
Stone and wood
Great Northern



BAR TAB

Set up a bar tab or have your guests pay for some drinks. Our carefully curated bar tab options are designed to cater to diverse tastes and preferences. From classic cocktails and fine wines to craft beers and premium spirits, we take pride in offering an array of choices that highlight both local favorites and international gems.

A standard bar tab includes 3 choice beers, 3 choice wines and 3 choice spirits.

BEER

Corona Extra	\$12
Somersby Cider Apple 4.0%	\$12
Stone & Wood	\$13
Great Northern	\$12

WINE

VIC 2022/23 BTW Sauvignon Blanc	\$12/\$60
VIC 2022/23 BTW Pinot Grigio	\$12/\$60
VIC 2022/23 BTW Rosè	\$12/\$60
VIC 2022 BTW Pinot Noir	\$12/\$60
VIC 2022 BTW Shiraz	\$12/\$60
VIC 2022/23 BTW Prosecco	\$12/\$60
VIC 2022/23 Zilqie Chardonnay	\$60
FRA Verve Cliquot Yellow Label Brut	\$185
FRA Moet and Chardon Imperial Brut	\$160
FRA Moet and Chardon Imperial Brut Magnum	\$360

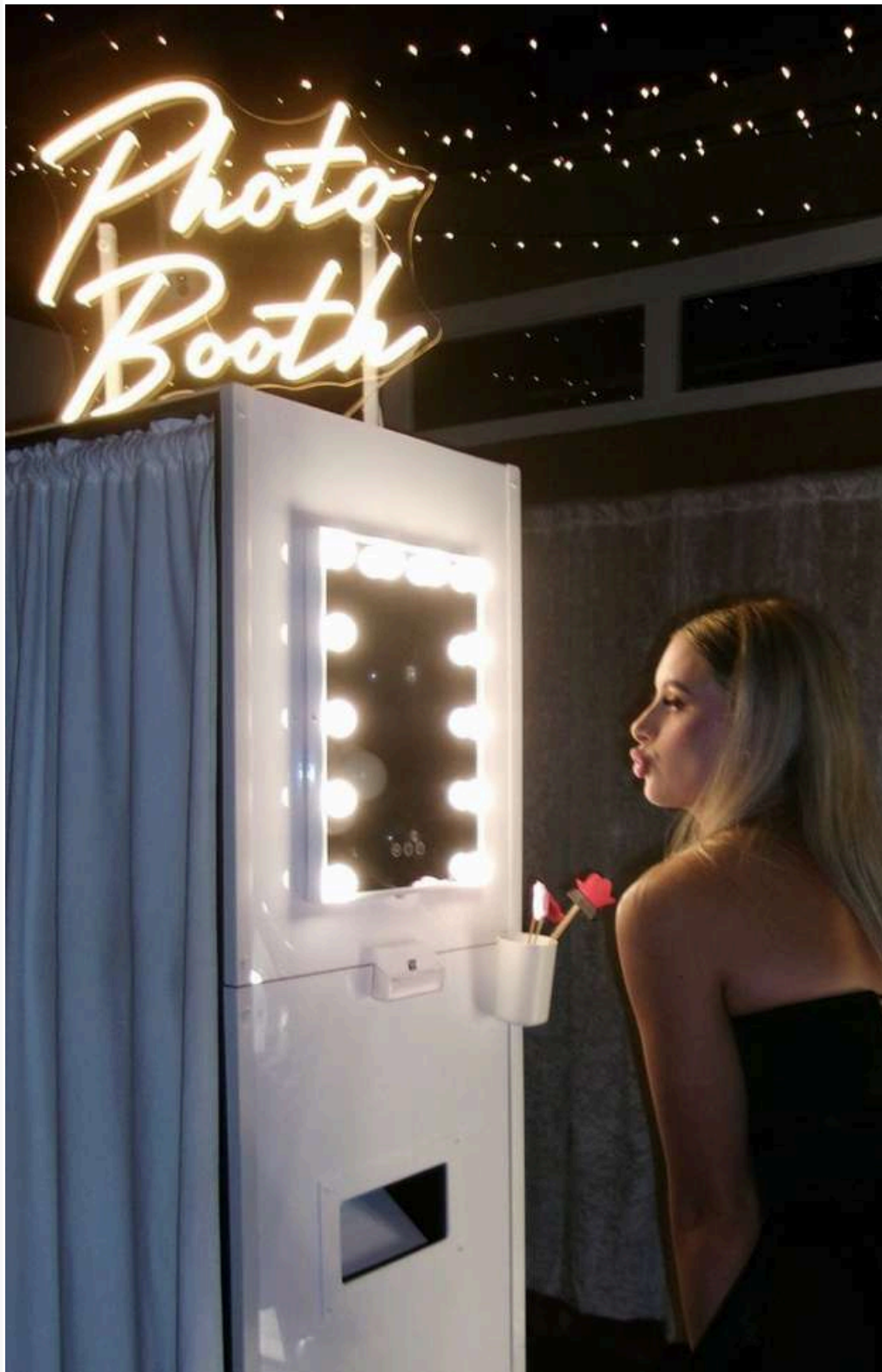
Premium wines, spirits and cocktails are available only in specific quantities via the Bar Tab and must be bought back by the client at a 30% discount at the event's conclusion

SPIRITS

Grey Goose Vodka	\$14
Smirnoff Vodka	\$11
Patron Silver Tequila	\$14
El Jimador Tequila	\$12
Don Julio 1942 Tequila	\$50
Tanqueray Gin	\$12
Bacardi White Rum	\$12
Sailor Jerry Spiced Rum	\$12
Bundaberg Rum	\$11
Chivas Regal 12Yo Scotch Whisky	\$15
Canadian Club Whisky	\$11
Markers Mark Bourbon	\$12
Jack Daniels Bourbon	\$12
Add Red Bull to any spirit purchase	\$3
COCKTAILS	
Espresso Martini	\$20
Amaretto Sour	\$20
Tommy's Margarita	\$20

Please talk to our team with any considering to have alternate beverages included on your bar tab.

Please note our menus are subject to change, your event co-ordinator will provide you with an updated menu 4 weeks prior to your event.



RECOMMENDED SUPPLIERS

Boheme Catering

(<http://www.bohemeevents.com.au/>)

360 Booth

(<https://booth360.com.au/>)

Photography & Videography

(<https://recapmedia.com.au/>)

Photo-booth

(<https://www.getaphotobooth.com.au/>)

Pictured on Left

Photo-booth & DJ

(<https://www.upbeat.social/>)

Indoor Fireworks

(<https://gmeventgroup.com.au/>)

DJ

(<https://gmeventgroup.com.au/>)

Live band

(<https://www.instagram.com/keysandco.au/?hl=en>)

Champagne Tower

(https://www.instagram.com/champagne_soirees/)

Pictured on page 6

Event Styling

(<https://www.instagram.com/littlesoires/>)

Florals

(<https://www.gloriosaflorals.com.au/>)

Wedding & Event Planning

(<https://melaniejaneweddingsandevents.com.au/>)

FAQ'S

Closing times

Our Standard closing time is 11pm, however the venue may stay open until 12am if agreed upon with the event coordinator.

Do I need security?

Security is a requirement for all events over 75 people and for 18th's and 21st's. The security will be booked through our trusted company and invoiced to the hirer prior to the event.

Is there a bond?

There is a refundable \$1000 bond to be paid directly to eSpace within 7 days to your event.

I see theres another level upstairs, can I access this?

This is our teams office, and is off limits for all guests. Unauthorised access to this floor will result in an instant loss of bond.

Should I leave a review?

We'd love to hear about your experience with us at eSpace.

Cancellations

In the event of any cancellations or change of date all payments will be forfeited, so please ensure everything is confirmed before proceeding with booking with us.

Can I supply my own food and beverage?

eSpace is partnered with Boheme Events for all catering within our venue, we're confident they'll exceed your expectations. If for any reason you'd to to engage with your own catering vendor there is a \$300 onboarding fee payable by the hirer to the venue.

Is eSpace BYO?

As eSpace is not a BYO licensed venue all beverages will need to be purchased through us.

Can I supply my own cake?

Absolutely! We have no extra costs associated with bringing in your own cake. Please note you'll need you'll provide your own napkins and cutlery if required.

Can I bring my own decorations?

You can customise eSpace however you'd like! All decorations and styling must be removed after your event or a \$500 pack down fee will be deducted from your bond. To organise a time to start setting up prior to your event please contact your events coordinator.

Parking

There is no onsite parking provided by eSpace, however The Howard Smith Wharves Carpark is just a 2 minute walk away.

Hotels Nearby

Situated in Brisbanes CBD there are an abundance of hotels nearby. We have discount partnerships with the Meriton and Hotel X, two nearby hotels.