



LOT  
TWENTY

*Functions*  
& EVENTS

Welcome to  
**LOT  
TWENTY**

**CELEBRATE IN STYLE  
AT PERTH'S FRIENDLIEST BAR**

THE TWO-STOREY, HERITAGE LISTED BUILDING IS NOW DECORATED WITH A WOODEN INDUSTRIAL INTERIOR WITH HANGING WARM HUED LIGHT BULBS AND PLAYFUL ARTWORKS. UPSTAIRS OFFERS AN OPEN KITCHEN EXPERIENCE WHILE DOWNSTAIRS HAS A BUZZING BAR ENVIRONMENT.

OUTSIDE WE HAVE A COURTYARD AND LARGE BEER GARDEN (THE DECK) TO ENJOY THE BEAUTIFUL PERTH WEATHER. WE CATER FOR EVERYTHING THAT'S FUN, FROM AN INFORMAL BIRTHDAY GATHERING WITH A FEW FRIENDS AND SOME TASTY COCKTAILS THROUGH TO FULL WEDDING RECEPTIONS, IF YOU HAVE AN IDEA FOR A PARTY THEN LET US HELP MAKE THAT A REALITY!

LOCATED IN THE PERTH CULTURAL CENTRE, WE'RE EASY TO GET TO, NO MATTER WHERE YOUR GUESTS ARE TRAVELLING FROM. WE'RE ON THE DOORSTEP OF NORTHBRIDGE, THE CBD AND ALL OF PERTH'S BEST HOTELS. WE LOVE TO PARTY, AND WE WILL TAKE EVERY CARE TO MAKE SURE YOU'LL LOVE YOUR PARTY, TOO!

COCKTAIL	
SEATED	
MUSIC OPTIONS	
WI-FI	
WHEELCHAIR ACCESS	



# Our VENUE

ACROSS LOT TWENTY , YOU CAN FIND FOUR SPACES AVAILABLE TO HOST YOUR NEXT EVENT. YOU CAN BOOK YOUR NEXT EVENT FOR A DEPOSIT OF \$100 THAT CAN BE PUT TOWARDS YOUR FINAL FUNCTION FOOD AND/OR DRINK COSTS, OR REDEEMED IN A BAR TAB ON THE DAY.

WE ALWAYS HAVE OUR OWN BACKGROUND MUSIC PLAYING WHICH WILL ENHANCE THE ATMOSPHERE OF THE VENUE AND GIVE IT A GREAT VIBE FOR YOUR EVENT.

**THE DECK** - THE PERFECT SPACE FOR HOSTING LARGER GROUPS. THE DECK HAS SUBSTANTIAL SEATING AS WELL AS STANDING ROOM AND CATERERS FOR ANY OCCASION. PERFECT IN THE HOTTER MONTHS, IN THE SUNLIGHT AND BEAUTIFUL AT NIGHT TIME LOOKING BACK AT THE GLOWING HERITAGE FAÇADE OF LOT TWENTY. THIS AREA IS THE MOST SOUGHT AFTER FOR FUNCTIONS.(LOCATED OUTDOORS)

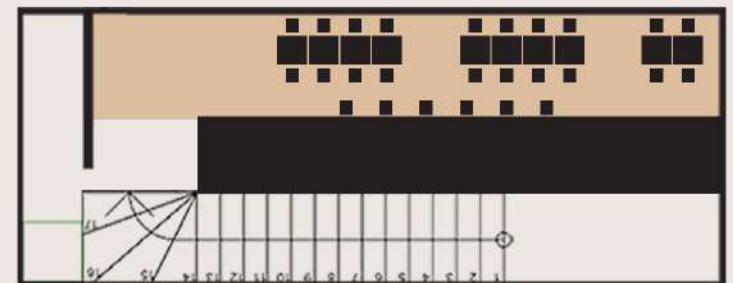
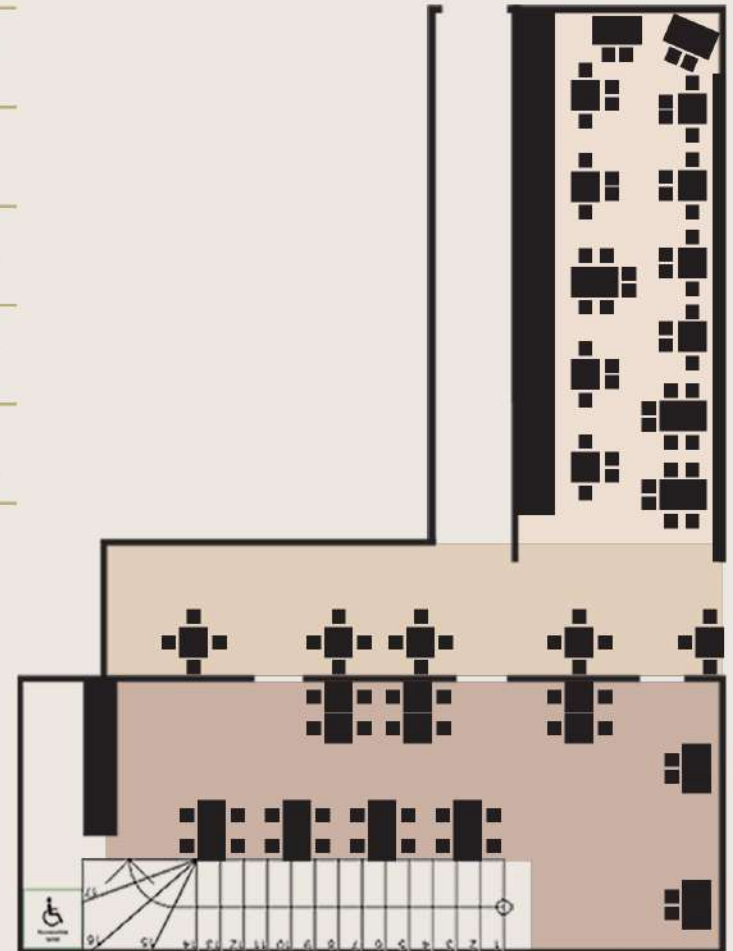
**THE MAIN BAR** - THE PERFECT SPACE FOR A SIT DOWN OR STAND UP FUNCTION, THIS SPACE IS SITUATED IN FRONT OF THE BAR AND IS AT THE CENTRE OF THE EXCITEMENT AT LOT TWENTY. (LOCATED INDOORS)

**THE COURTYARD** - OUR COLOURFUL COURTYARD IS THE IDEAL AREA FOR ANY SOCIAL OCCASION, WITH A RANGE OF SEATED OR STANDING OPTIONS. (LOCATED OUTDOORS)

**UPSTAIRS** - IS A PRIVATE SPACE THAT OVERLOOKS NORTHBRIDGE AND OUR OPEN KITCHEN. LIMITED SEATING, PERFECT FOR A STANDUP FUNCTION. (LOCATED INDOORS, UPSTAIRS)

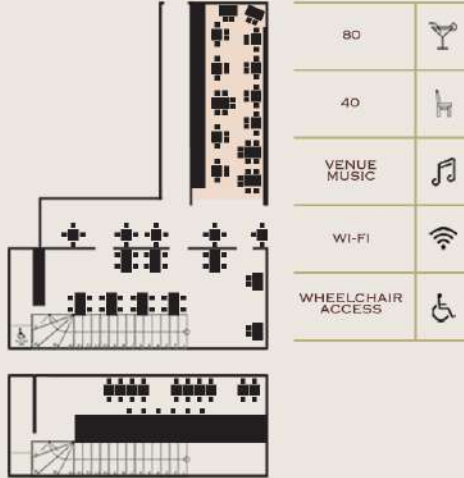
120	
120	
AMBIENT MUSIC	
WI-FI	
WHEELCHAIR ACCESS DOWNSTAIRS	

- DECK
- COURTYARD
- INSIDE
- UPSTAIRS



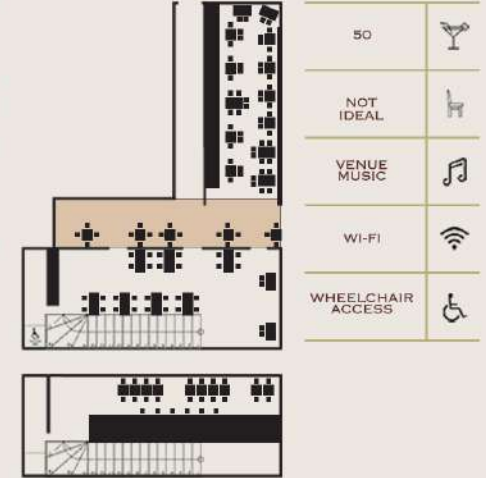
# The DECK

AN IDEAL SETTING FOR HOSTING LARGER GATHERINGS, THE DECK OFFERS AMPLE SEATING AND STANDING SPACE, MAKING IT SUITABLE FOR VARIOUS EVENTS AND SPECIAL OCCASIONS. IT'S PARTICULARLY ENJOYABLE DURING WARMER MONTHS, BASKING IN SUNLIGHT, AND BECOMES ENCHANTING IN THE EVENING, WITH A CAPTIVATING VIEW OF LOT TWENTY'S ILLUMINATED HERITAGE FAÇADE. THIS AREA IS THE MOST SOUGHT AFTER FOR FUNCTIONS



# The COURTYARD

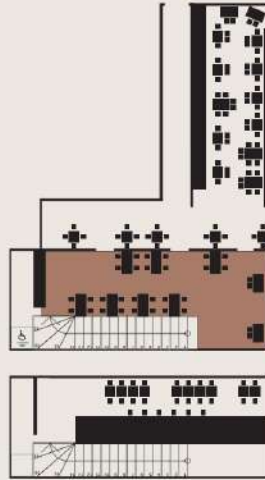
OUR VIBRANT COURTYARD SERVES AS THE PERFECT SETTING FOR ANY SOCIAL EVENT, OFFERING A VARIETY OF SEATING AND STANDING CHOICES. WHETHER YOU PREFER A COZY SEAT OR THE FREEDOM TO STAND AND MINGLE, THIS COLORFUL SPACE CATERS TO YOUR PREFERENCES, CREATING AN INVITING ATMOSPHERE FOR A MEMORABLE GATHERING.



# The MAIN BAR

THE MAIN BAR AT LOT TWENTY IS AN IDEAL VENUE FOR BOTH SEATED AND STANDING FUNCTIONS. POSITIONED IN FRONT OF THE BAR, THIS SPACE TAKES CENTER STAGE, IMMERSING GUESTS IN THE HEART OF THE EXCITEMENT.

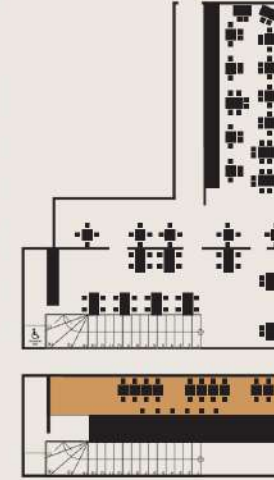
WHETHER YOU PREFER A RELAXED SEATED GATHERING OR A MORE DYNAMIC STANDING EVENT, THE MAIN BAR PROVIDES THE PERFECT SETTING FOR AN UNFORGETTABLE EXPERIENCE.



60	
40	
VENUE MUSIC	
WI-FI	
WHEELCHAIR ACCESS	

# The UPSTAIRS

A SECLUDED AREA WITH A VIEW OVER NORTHBRIDGE AND OUR OPEN KITCHEN, THIS PRIVATE SPACE IS VERSATILE, SUITABLE FOR BOTH STAND-UP AND SIT-DOWN FUNCTIONS. WHETHER YOU'RE ENVISIONING A DYNAMIC GATHERING WHERE GUESTS MINGLE FREELY OR A MORE INTIMATE SEATED AFFAIR, THIS SPACE CATERS TO YOUR EVENT NEEDS, PROVIDING A CHARMING BACKDROP FOR ANY OCCASION.



35	
22	
PRIVATE MUSIC	
WI-FI	
NO W/CHAIR ACCESS	



# Exclusive VENUE HIRE

## YOU CAN HOLD YOUR NEXT FUNCTION EXCLUSIVELY WITH US

OUR FULL VENUE CAN BE EXCLUSIVELY SET ASIDE FOR YOUR NEXT EVENT. SUITABLE FOR ENGAGEMENT PARTIES, WEDDINGS, BIRTHDAYS, CORPORATE EVENTS AND CHRISTMAS PARTIES.

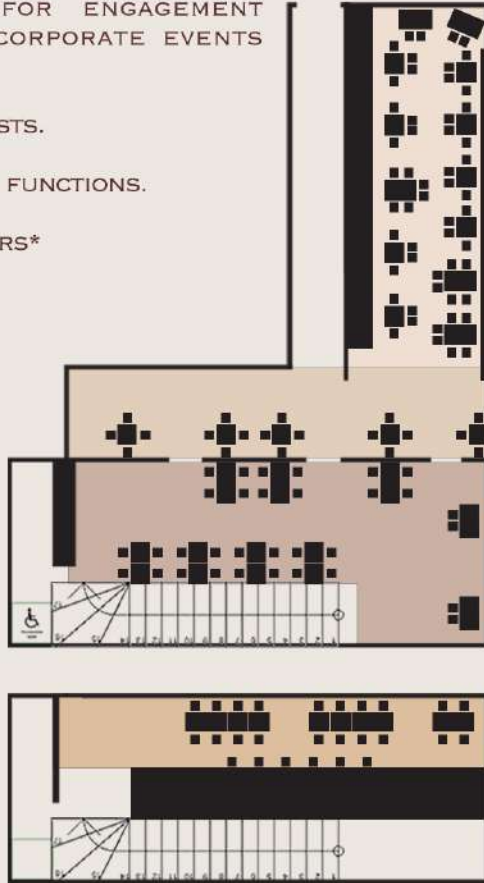
AVAILABLE FOR GROUPS UP TO 120 GUESTS.

AVAILABLE FOR COCKTAIL AND SIT-DOWN FUNCTIONS.

AVAILABLE OUTSIDE OUR REGULAR HOURS\*

\*PRICE ON ENQUIRY

120	
120	
PRIVATE MUSIC	
WI-FI	
WHEELCHAIR ACCESS	





# Function CATERING

---

## SMALL BITES

<b>COCKTAIL SAMOSA</b> WITH SWEET CHILI SAUCE	<b>2EA</b>
<b>VEGAN CHILI BALLS</b> WITH SWEET CHILI SAUCE	<b>2EA</b>
<b>PORK BELLY BITES</b> WITH PEDRO XIMENEZ AND SHALLOTS	<b>3EA</b>
<b>CHORIZO CROQUETTES</b> WITH SRIRACHA MAYO & PAPRIKA	<b>3EA</b>
<b>SAUSAGE ROLLS</b> WITH TOMATO CHUTNEY	<b>3EA</b>

## LARGER BITES

<b>THREE CHEESE ARANCINI</b> WITH NAPOLITANA SAUCE	<b>4EA</b>
<b>MUSHROOM ARANCINI</b> WITH NAPOLITANA SAUCE	<b>4EA</b>
<b>GRILLED STUFFED MUSHROOM</b> WITH PARMESAN CHEESE	<b>5EA</b>
<b>PATATAS BRAVAS</b> WITH SAUCE, SOUR CREAM & SHALLOTS	<b>5EA</b>
<b>BARBECUE BRISKET SLIDER</b> WITH CHIPOTLE SLAW	<b>6EA</b>

## BOARDS

**42EA**

**SHARED CHARCUTERIE** WITH CURED MEATS, CHEESE, OLIVES,  
PICKLED VEGETABLES, HUMMUS AND BAGUETTE

## SWEET

<b>VANILLA ICE CREAM</b> W~ CHOCOLATE GANACHE & COOKIE CRUMB	<b>10EA</b>
<b>CHOCOLATE SEMI FREDDO</b> W~ STRAWBERRY COULIS & COOKIE CRUMB	<b>15EA</b>



# Beverage PACKAGES

---

## BACK STAGE PASS

1 HOUR - \$30PP  
2 HOURS - \$50PP  
3 HOURS - \$65PP

### SPARKLING WINE

HOUSE SPARKLING PINOT CHARDONNAY

### WHITE WINE

HOUSE SEMILLON SAUVIGNON BLANC

### RED WINE

HOUSE CABERNET MERLOT

### DRAUGHT BEER

DINGO LAGER  
SINGLE FIN  
HAZY PALE ALE  
BOONDIE PALE ALE

### SOFT DRINKS

INCL. HOUSE SODAS

## ACCESS ALL AREAS

1 HOUR - \$45PP  
2 HOURS - \$65PP  
3 HOURS - \$90PP

### SPARKLING WINE

ALL SPARKLING WINES

### WHITE WINE

ALL WHITE WINES

### RED WINE

ALL RED WINES

### SPIRITS

ALL FIRST POUR SPIRITS & MIXERS

### DRAUGHT BEER

ALL TAP BEER  
ALL PACKAGED BEER

### SOFT DRINKS

INCL. HOUSE SODAS

## BAR TAB ON CONSUMPTION

A BAR TAB CAN BE ARRANGED FOR YOUR FUNCTION WITH A SPECIFIED LIMIT OR AMOUNT IN MIND THAT YOU FEEL COMFORTABLE WITH SPENDING, AND A SELECTION OF LIMITED DRINKS OR OPEN BAR TO YOUR SPECIFICATIONS. YOUR BAR TAB CAN BE REVIEWED AS YOUR FUNCTION PROGRESSES AND INCREASED IF REQUIRED. AT ANY POINT YOU ARE WELCOME TO TURN THE BAR INTO A 'PAY AS YOU GO' BAR SO YOUR GUESTS CAN PURCHASE THEIR OWN DRINKS.

### PLEASE NOTE:

**RESPONSIBLE SERVICE OF ALCOHOL** - IN ACCORDANCE TO THE LIQUOR CONTROL ACT 1988, LOT TWENTY RESERVES THE RIGHT TO REFUSE THE SERVICE OF ALCOHOL TO ANY GUESTS CONSIDERED TO BE UNDERAGE, INTOXICATED OR BEHAVING IN AN OFFENSIVE MANNER.

**OTHER CONDITIONS** - IF ON A DRINKS PACKAGE GUESTS CAN ONLY ORDER FOR THEMSELVES AND ONE DRINK AT A TIME AS IN ACCORDANCE WITH THE LIQUOR CONTROL ACT 1988. WHEN SELECTING A BEVERAGE PACKAGE ALL GUESTS MUST BE ON THE SAME PACKAGE. ALL PACKAGES MUST BE PAID FOR IN FULL BEFORE THE EVENT UNLESS WITH PRIOR APPROVAL. ADDITIONAL TIME REQUESTED ON THE NIGHT MUST BE PAID FOR UP FRONT AND WILL BE CHARGED AS THE NEXT TIER OF THE PACKAGE. THREE HOURS IS THE MAXIMUM TIME A PACKAGE CAN RUN UNLESS WITH PRIOR NEGOTIATION. THE DRINKS PACKAGE WILL START WHEN THE FIRST PERSON ORDERS THEIR FIRST DRINK. WE WILL PROVIDE YOU WITH WRISTBANDS, SO WHEN YOU ARRIVE, PLEASE COME AND SEE THE STAFF AND THEY WILL SET YOU UP.







## Add on a COCKTAIL

---

<b>BELLINI</b>	BUBBLES, PEACH	<b>12</b>
<b>ROSSINI</b>	BUBBLES, STRAWBERRY	<b>12</b>
<b>APEROL SPRITZ</b>	APEROL, BUBBLES, SODA	<b>14</b>
<b>STRAWBERRY GIN SMASH</b>	GIN, STRAWBERRY, CITRUS, SODA	<b>16</b>
<b>BLACKBERRY VODKA SMASH</b>	VODKA, STRAWBERRY, CITRUS, SODA	<b>16</b>
<b>APEROL SPRITZ PIMPED</b>	APEROL, GIN, BUBBLES, SODA	<b>18</b>
<b>YELLOW BIRD</b>	RUM, CITRUS, TROPICAL JUICE	<b>18</b>
<b>PORNSTAR MARTINI</b>	VODKA, VANILLA, LIME, PASSIONFRUIT	<b>18</b>
<b>LONG ISLAND ICED TEA</b>	VODKA, TEQUILA, RUM, TRIPLE SEC, GIN, COLA	<b>18</b>
<b>MAPLE MAC</b>	IRISH WHISKEY, GINGER WINE	<b>18</b>
<b>EL DIABLO</b>	TEQUILA BLANCO, LIME, RASPBERRY, GINGER BEER	<b>20</b>
<b>SLOE GIN SPRITZ</b>	SLOE GIN, BUBBLES, SODA	<b>20</b>
<b>LIMONCELLO SPRITZ</b>	LEMON LIQUEUR, BUBBLES, SODA	<b>20</b>
<b>TOKYO ICED TEA</b>	GIN, RUM, VODKA, TEQUILA, TRIPLE SEC, MIDORI	<b>22</b>

# Events & EXPERIENCES

## COCKTAIL CLASSES

\$80PP

A HANDS ON INTERACTIVE EXPERIENCE LED BY THE BEST AND MOST AWARDED BARTENDERS IN PERTH WHERE YOU WILL LEARN TO CREATE YOUR OWN COCKTAILS TO PERFECTION. IDEAL FOR ANY CORPORATE EVENT, BIRTHDAY, HENS NIGHT OR ANYONE LOOKING TO LEARN THE FINER ART OF MAKING DELICIOUS COCKTAILS.

## MASTERCLASSES & WORKSHOPS

FROM \$80PP

A SIT DOWN EVENT WHERE YOU WILL LEARN ABOUT YOUR CHOSEN TOPIC OF INTEREST, GIVING YOU ALL THE KNOWLEDGE YOU NEED TO BE THE SUBJECT MATTER EXPERT AT YOUR NEXT DINNER PARTY.

## MAI TAI GUESS THE COCKTAIL

\$65PP

POP ON A BLINDFOLD AND SEE IF YOU CAN CORRECTLY GUESS THE FOUR COCKTAIL TASTERS MADE BY OUR EXPERIENCED BARTENDERS. YOU WILL GET TO TASTE AND GUESS THE COCKTAILS CREATED AS PART OF A SOCIAL DRINKING GUESSING GAME WITH FRIENDS. WILL IT BE A MAI TAI OR A LONG ISLAND ICED TEA? ONCE YOU HAVE THE BLINDFOLD ON, YOU'LL JUST HAVE TO WAIT AND SEE!

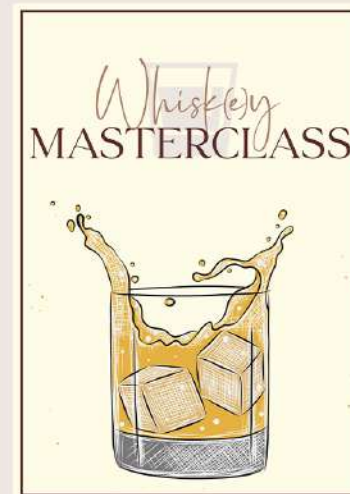
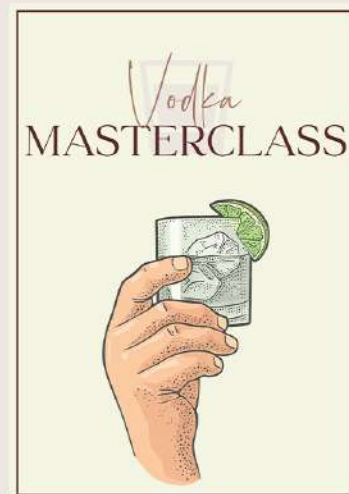
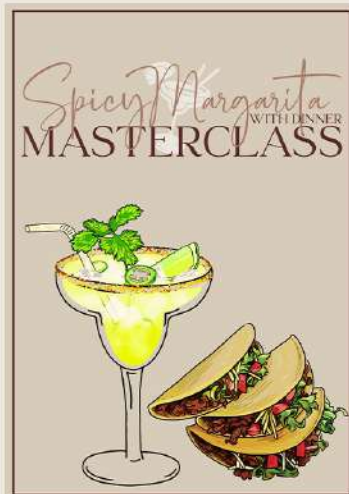
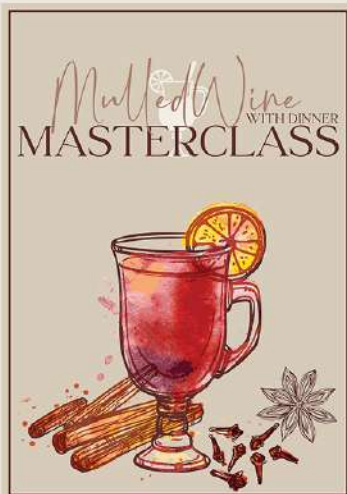
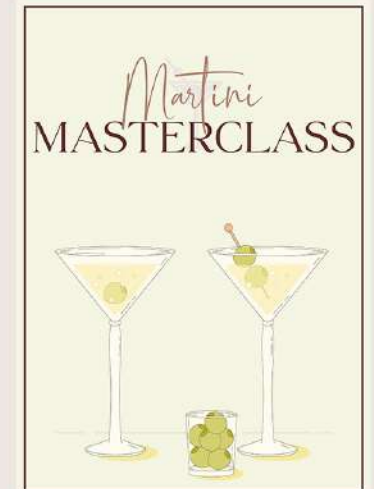
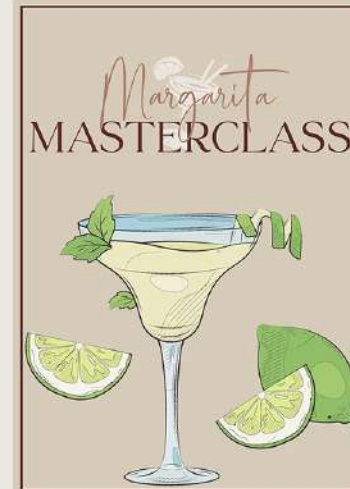
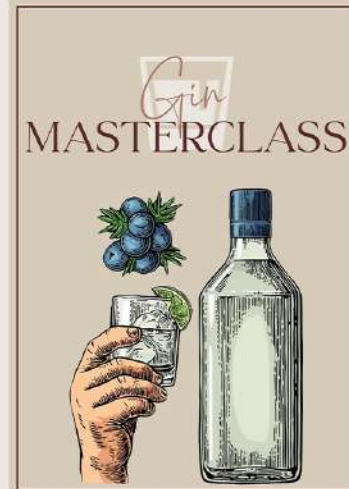
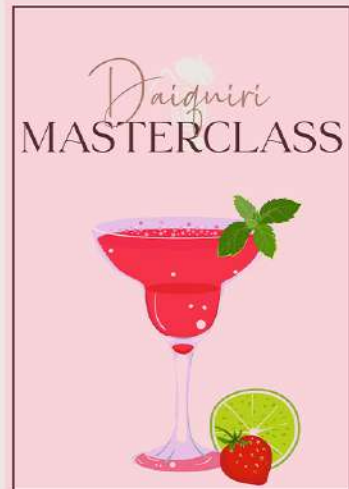
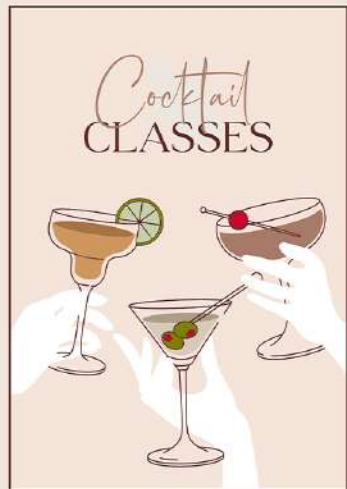
## ROSE & DUMPLINGS

\$90PP

ROSÉ & DUMPLINGS LOVERS REJOICE! INDULGE IN A DELIGHTFUL EXPERIENCE FEATURING FIVE SERVINGS OF DELECTABLE DUMPLINGS, EACH EXPERTLY PAIRED WITH A GLASS OF ROSÉ. RUNS MONTHLY.



# Classes & WORKSHOPS



# Terms & CONDITIONS

---

## QUOTES AND BOOKING CONFIRMATION

A DEPOSIT IS REQUIRED TO CONFIRM A FUNCTION BOOKING. THE AMOUNT WILL BE CONFIRMED BY YOUR EVENT COORDINATOR. A BOOKING FORM MUST BE COMPLETED SO A DEPOSIT AND E-CONTRACT CAN BE ISSUED.

## CANCELLATION POLICY

SHOULD YOU WISH TO CANCEL YOUR CONFIRMED BOOKING, 7 DAYS NOTICE IS REQUIRED. SHOULD YOUR BOOKING BE CANCELLED LESS THAN SEVEN (7) DAYS OF THE EVENT DATE, LOSS OF DEPOSIT. CANCELLATION LESS THAN THREE (3) DAYS PRIOR TO THE FUNCTION, LOSS OF DEPOSIT + COST OF ANY GOODS LOT TWENTY HAS INCURRED IN ORDERING FOOD FOR YOUR FUNCTION.

## TWO WEEKS PRIOR

ALL DETAILS FOR THE EVENT MUST BE FINALISED NO LATER THAN TWO (2) WEEKS PRIOR TO THE EVENT. 'DETAILS' INCLUDE BUT ARE NOT LIMITED TO: EVENT TIMING, NUMBER OF GUESTS, FOOD ORDER, FORMAT FOR DRINKS AND ANY SPECIAL REQUESTS. ANY REQUESTED CHANGES AFTER THE 2 WEEKS PRIOR TO THE BOOKING MAY INCUR ADDITIONAL CHARGES WHICH WILL BE DISCUSSED AT EACH REQUEST. ALL FUNCTION FOOD ORDERS MUST BE CONFIRMED FOURTEEN (14) DAYS PRIOR TO YOUR FUNCTION AND REQUIRE FULL PAYMENT REGARDLESS OF CONSUMPTION

## SLIPPAGE

ANY DECREASE IN NUMBERS IN EXCESS OF 20% WITH LESS THAN 7 DAYS NOTICE TO THE EVENT WILL INCUR A SLIPPAGE FEE. THIS WILL BE CALCULATED ON 80% OF THE ANTICIPATED COST PER PERSON.

## MINIMUM SPENDS

PLEASE NOTE MINIMUM SPENDS APPLY TO HIRE OUT LOT TWENTY FOR EXCLUSIVE USE. THE MINIMUM SPEND IS BASED ON FOOD AND BEVERAGE ONLY. IF THE TOTAL CHARGE OF FOOD AND BEVERAGE DOES NOT MEET THE REQUIRED MINIMUM SPEND AS PER THE AGREEMENT, AN ADDITIONAL VENUE HIRE WILL APPLY TO ADJUST THE SHORTFALL. THERE IS NO REFUND OR CREDIT ISSUED IF IN THE EVENT THERE IS A DROP OF NUMBERS OR THE BAR TAB IS NOT REACHED.

## PRICING

PRICES ARE BASED ON CURRENT AND EXPECTED COST INCREASES, ANY CHANGE IN PRICE WILL BE ADVISED WITHIN ONE (1) MONTH OF YOUR EVENT. ALL PRICES ARE INCLUSIVE OF GST.

## RESPONSIBLE SERVICE OF ALCOHOL

LOT TWENTY COMPLIES WITH WESTERN AUSTRALIAN RESPONSIBLE SERVICE OF ALCOHOL LEGISLATION. ALL STAFF ARE TRAINED BY THE LIQUOR LICENSING ACCREDITED 'RSA' (RESPONSIBLE SERVICE OF ALCOHOL). STAFF MAY REFUSE TO SERVE ALCOHOL TO ANY PERSON WHO THEY BELIEVE TO BE INTOXICATED. ANY INTOXICATED PERSON WILL BE REMOVED FROM THE VENUE. IN ACCORDANCE WITH LIQUOR LICENSING LAWS OF WESTERN AUSTRALIA, PERSONS UNDER THE AGE OF 18 ARE NOT PERMITTED TO CONSUME ALCOHOL ON THE PREMISES. GUESTS WILL BE SUBJECT TO 1 DRINK PER PERSON FOR THE LAST 30MINS OF A BEVERAGE PACKAGE.

## SECURITY

MANAGEMENT RESERVES THE RIGHT TO EXCLUDE OR REMOVE ANY PERSON(S) FROM THE PREMISES AND SURROUNDING CONFINES WITHOUT LIABILITY SHOULD THE ACTIVITIES BE CONSIDERED EXCESSIVELY NOISY, DISRUPTIVE, OFFENSIVE OR ILLEGAL.

## BYO POLICY

NO FOOD OR BEVERAGES FROM OUTSIDE LOT TWENTY IS PERMITTED FOR CONSUMPTION INTO THE VENUE UNLESS A SPECIAL ARRANGEMENT HAS BEEN MADE, E.G. CAKE. SPECIAL CIRCUMSTANCES: GIFTS CONTAINING FOOD OR ALCOHOL ARE PERMITTED INTO LOT TWENTY, HOWEVER, BY NO MEANS PERMITTED TO BE CONSUMED ON THE PREMISES UNLESS A SPECIAL ARRANGEMENT HAS BEEN MADE AND APPROVED IN WRITING BY MANAGEMENT.

## CATERING

MENU AND BEVERAGE SELECTIONS ARE REQUIRED AT LEAST 14 DAYS PRIOR TO YOUR EVENT. IF SELECTIONS ARE NOT ADVISED AT THIS POINT, YOUR SELECTION CANNOT BE GUARANTEED TO BE AVAILABLE. LOT TWENTY'S CHEFS CAN CATER FOR MOST DIETARY REQUIREMENTS. SPECIAL DIETARY REQUIREMENTS MUST BE COMMUNICATED TO LOT TWENTY AT LEAST 10 WORKING DAYS PRIOR TO THE EVENT.

## INSURANCE AND DAMAGE

LOT TWENTY WILL TAKE ALL RESPONSIBLE CARE; HOWEVER, WILL NOT ACCEPT RESPONSIBILITY FOR ANY LOSS OR DAMAGE TO PERSONAL PROPERTY PRIOR, DURING OR AFTER THE FUNCTION. IN THE UNLIKELY EVENT THAT DAMAGE TO ANY LOT TWENTY PROPERTY OCCURS AS A RESULT OF ANY GUEST RELATED TO THE FUNCTION, THE FUNCTION ORGANISER AGREES TO ASSUME ALL LIABILITY AND EXPENSE AND AGREES THAT, LOT TWENTY MAY CHARGE THE ABOVE CREDIT CARD FOR ALL SUCH CHARGES.

## SOCIAL MEDIA DISCLAIMER

WE LOVE TO SHARE EVENT PHOTOS AND FOOTAGE TAKEN AT OUR VENUE TO OUR RESPECTIVE MEDIA PLATFORMS - NAMELY FACEBOOK AND INSTAGRAM. WE MAY ALSO CHOOSE TO SHOWCASE CONTENT VIA OUR OWN DIGITAL PLATFORMS SUCH AS LOT TWENTY WEBSITE AND EMAIL NEWSLETTERS. PLEASE LET US KNOW IF YOU WOULD PREFER WE DIDN'T USE CONTENT FROM YOUR EVENT FOR MARKETING AND PROMOTIONAL PURPOSES.

## DECORATIONS, DISPLAY AND SIGNAGE

NOTHING IS TO BE NAILED, SCREWED, STAPLED OR ADHERED TO ANY WALL, DOOR, FLOORS OR OTHER SURFACE OF THE BUILDING UNLESS APPROVED BY MANAGEMENT. CONFETTI, BALLOONS, PARTY POPPERS, COLOURED STREAMERS, OPEN FLAME CANDLES, GLITTER SHAPES, SMOKE MACHINES AND BUBBLE MACHINES ARE NOT PERMITTED, UNLESS APPROVED BY MANAGEMENT. SIGNAGE IN PUBLIC AREAS IS TO BE KEPT TO A MINIMUM AND MUST BE APPROVED BY MANAGEMENT.

## DELIVERIES AND BUMP IN

THE EVENT COORDINATOR MUST BE ADVISED OF ALL EXTERNAL CONTRACTORS AND DELIVERY ARRANGEMENTS PRIOR TO THE EVENT INCLUDING DELIVERY TIMES, DESCRIPTION AND CONTACT NUMBERS. ITEMS BEING DELIVERED MUST BE MARKED CLEARLY AND DELIVERED AS CLOSE TO THE START OF THE EVENT AS POSSIBLE. BUMP IN TIME IS TWO (2) HOURS PRIOR TO A FUNCTION, UNLESS OTHERWISE ARRANGED WITH THE EVENT COORDINATOR. LOT TWENTY WILL NOT ACCEPT DELIVERIES PRIOR TO THE AGREED BUMP IN TIME DUE TO LIMITED STORAGE SPACE WITHIN THE BUILDING. HOWEVER, IN SPECIAL CIRCUMSTANCES, IF THERE IS NOT AN EVENT BOOKED THE DAY BEFORE, WE CAN ALLOW DELIVERIES TO BE MADE PRIOR TO THE EVENT.

## BUMP OUT

BUMP OUT SHOULD OCCUR AT THE CONCLUSION OF EVENT. ANY TIMES OUTSIDE THOSE ALLOCATED MUST BE AGREED TO IN WRITING FROM MANAGEMENT. LOT TWENTY IS CLOSED ON SUNDAYS AND PUBLIC HOLIDAYS. IF YOUR EVENT FALLS ON A SATURDAY, THE NEXT AVAILABLE WORKING DAY WILL BE THE SCHEDULED DAY FOR BUMP OUT UNLESS OTHERWISE SPECIFIED.

# Contact & FIND US

---

FOR ANY FURTHER QUESTIONS OR ENQUIRIES,  
PLEASE CONTACT OUR FUNCTIONS TEAM ON THE BELOW:

**LOT  
TWENTY**

info@lot.co (08) 6162 1185



lot20.co

20/57 James St, Perth WA 6000

 /lottwenty  /lottwenty

