

Industrial School

Abbotsford Convent.



About

The Convent's most gritty, urban and moody space, the Industrial School is a versatile and unique venue. Its long, rectangular shape allows this venue to split into two distinct spaces that seem to both connect and divide in harmony via a series of openings along the length of the building. The Industrial School features a rich patina of age from multiple uses over time and connects to the Magdalen Laundry and Sacred Heart Courtyard for a wider event footprint.

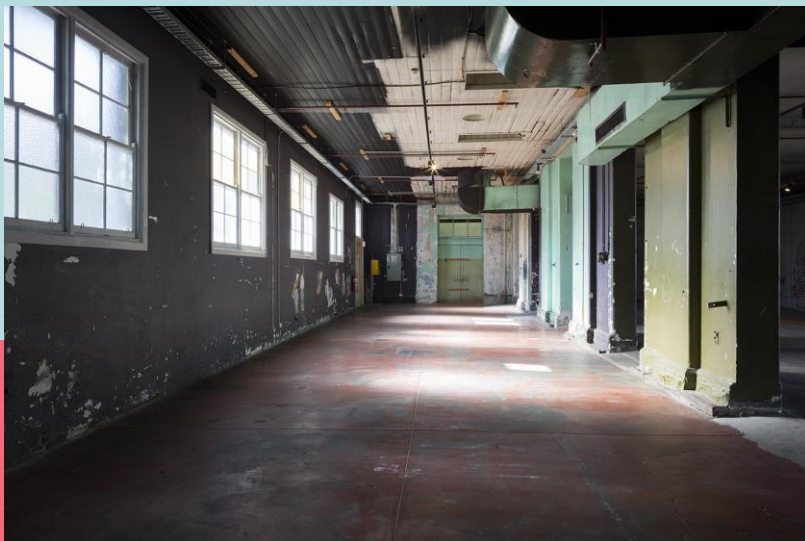
Designed by JB Denny and built in 1868, the Industrial School is the oldest surviving building within the Convent grounds. Originally a two-story building comprising workrooms and dormitories, it is the oldest known privately built school of industry in Victoria, which offered trade-specific training to its former occupants. The foundations of the heavy-duty equipment it once housed can still be seen on the floor.

Facilities

The space includes 3-phase power and single-track lighting. Additional facilities including tables, chairs, whiteboards, heaters, fans are available. Basic AV equipment is available to hire.

Accessibility

The Industrial School is wheelchair accessible, however the flooring is mildly uneven.



Key Features

- Partitioned room
- Distressed walls

Dimensions

- Large area: 22.8 x 7.6m
- Small area: 22.5 x 5.5m

Industrial School: venue hire rates

Abbotsford
Convent.

	Full day (8 hours)	Half day (4 hours)	7-day week
Standard - high impact	\$800	\$600	\$4000
Standard - low impact	\$400	\$300	\$2000
Community/NFP - high impact	\$600	\$450	\$3000
Community/NFP - low impact	\$300	\$225	\$1500
Subsidised - high impact	\$400	\$300	\$2000
Subsidised - low impact	\$200	\$150	\$1000

Pricing

Impact refers to the impact the event will have on the Convent. It is assessed based on the nature of the event, number of attendees, anticipated noise levels, infrastructure, catering and services required. Please note that all events with a live audience are deemed high impact.

Subsidised rates are offered at the ACF's discretion on a case-by-case basis.

A non-negotiable cleaning fee will be added to each day of venue hire and is undertaken according to the use of the room.

The minimum hire period is four hours. Additional hours beyond this will default to a full day hire.

A 7-day week booking charges only for five days, providing two days free of charge.

Administrative fees may be added depending on the nature and complexity of the event.

Film and photography bookings attract an additional permit fee. Details can be found [here](#).

Prices do not include GST.

Site visits

To arrange a site visit, first register the event by booking online.

Site visits are predominantly reserved for events that have received a formal quotation. As our venues are frequently occupied, site visits must be by appointment, and we cannot accept drop-ins.

Staffing and equipment

Certain event types may require a compulsory Venue Supervisor fee for the duration of the hire period.

Front of house and additional support crew are available for minimum four-hour calls.

Basic furniture and AV equipment is available for hire, subject to availability.

Industrial School: capacity and safety

Abbotsford
Convent.

Style	Capacity
Standing room only	300
Seated - Theatre	150
Market stalls	30

Compliance, Production and Complex Events

The Abbotsford Convent has a methodology in place to ensure the safety of all staff, venue hirers, visitors and community members. Hirers with complex events are invited to lodge an application form [here](#) and may be required to submit an event proposal for evaluation. Appropriate production and compliance documentation may be requested, including but not limited to:

- Runsheet
- Production schedule
- Floorplans and site maps
- Risk assessment
- Proof of public liability insurance
- Waste management plan
- Liquor license

Administration and additional staffing fees may apply.

Complex events will require production meetings with our Venue Hire and Operations teams.

All hirers and their suppliers must complete a Precinct Safety Induction upon arrival at or prior to the event.

The Convent reserves the right to decline an event if it does not align with our [core values](#).



Caring for our venues

Abbotsford Convent is a unique heritage arts precinct with specific hiring conditions.

Hirers must not affix anything to the interior or exterior walls of the venues or buildings as our venues are heritage listed, aged, and very sensitive.

Naked flames and oil-based smoke machines are not permitted.

Confetti, rice and balloons are not permitted.

Electrical items, ranging from urns and kettles to amps and lighting, must be tested and tagged.

Overnight storage is not permitted unless the venue has been booked for this purpose.

You can find our full Conditions of Hire [here](#).

Industrial School: floor plan

Abbotsford Convent.

