

RICHMOND

MicDrop



SLEEK, CHIC & DANGEROUS TO KNOW

MicDrop Richmond is quintessentially Richmond. Chic, hip, versatile and oh-so very innovative. With its polished concrete floor, exposed brick walls, and abundant natural light, it's a space that's designed to elevate your corporate event from 'meh' to mesmerising.

The 120sqm room includes a stage, dimmable lighting, breakout boardroom and high-speed wifi. There's even a connected kitchen to keep those celebratory end-of-event bevies nice and cold.

Ideal for workshops, team meetings, brainstorming and briefings, presentations and product launches.

Not suitable for bingo, weddings, bar mitzvahs, engagement parties or anything boring.



FLOOR PLAN

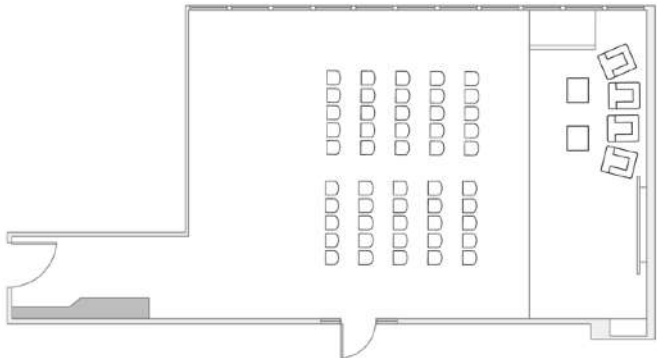


FLOOR PLAN OPTIONS

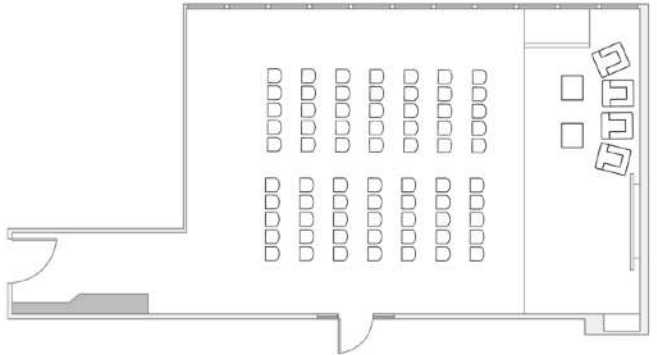
MAX CAPACITIES

Cocktail	80
Theatre	70
Banquet Rounds	48
Cabaret Rounds	40

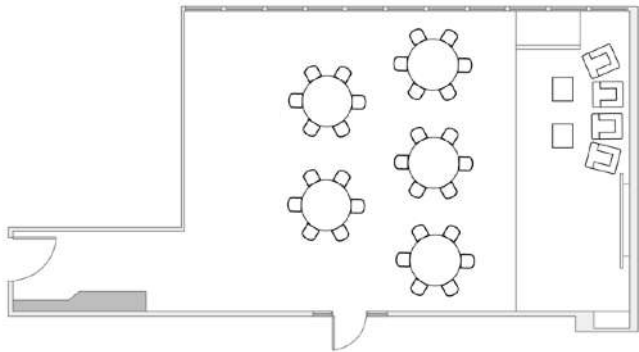
THEATRE 50PAX
(VENUE DEFAULT)



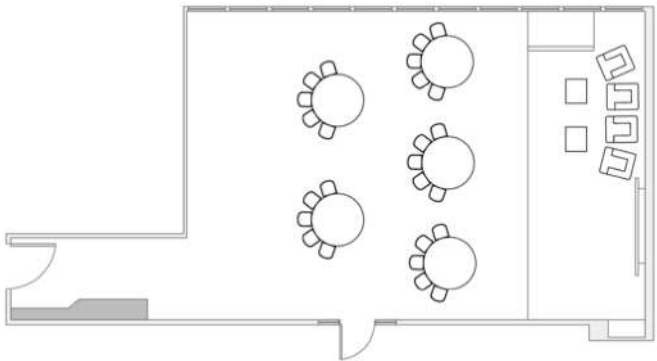
THEATRE 70PAX



BANQUET 30PAX



CABARET 25PAX



AUDIO VISUAL SYSTEM

We have designed a plug & plug AV system to make your experience a breeze. With side stage HDMI access for presenter use. Use of the AV system is \$300 p/day.

AUDIO

- 2 x handheld microphones
- 2 x lapel microphones
- 3.5mm or RCA audio input
- Apple AirPlay wireless control

VISION

- 96" multi-panel LCD screen
- HDMI input, aligned to audio
- Apple AirPlay wireless control

FURNITURE

Sleek custom designed lounge furniture is available for use, and included in venue hire. Should you require any additional furniture, you are welcome to arrange this via our recommended suppliers who know the venue well.

INVENTORY

- 10 x Trestle tables
(see note regarding linen)
- 9 x Round banquet tables
(see note regarding linen)
- 3 x Wooden hightop cocktail tables
- 60 x Wooden back leather chairs
- 4 x Brown single seater leather lounges
- 2 x Industrial coffee tables
- Venue also includes built in stage
(3.4mD x 9mW).

LINEN

It is recommended that linen is used to cover the trestle and round tables. We suggest reaching out to Simmons Linen.

RECOMMENDED SUPPLIERS

CATERING

External catering is welcomed at the venue, suggested suppliers below:

Ed Dixon Food Design	www.eddixonfooddesign.com
Blakes Feast	www.blakesfeast.com.au
Goodies Catering	www.goodiegroup.com

Or, local cafe 7 Grams can be contacted on 03 9429 8505

HIRE EQUIPMENT



Craig Garrow

CraigG@harrythehirer.com.au
03 9429-8688
harrythehirer.com.au

ADDITIONAL AV EQUIPMENT



David Wailes

dave@technicalevents.com.au
03 9372 6886
technicalevents.com.au

LINEN HIRE



info@linenhiredi.com.au
03 9500 2499
simmonslinenhire.com.au



NEED TO KNOW VENUE INFO

CONTACT

hello@micdrop.events

7 DAYS

MicDrop Richmond is available 7 days a week from 8:00am - 12:00am

RESTROOMS

Dedicated male & female restrooms as well as separate accessible restroom

HEATING & COOLING

Keep your guests comfortable with full in house heating & cooling

LOADING BAY ACCESS

Loading Bay at rear of venue with access from William St (see map)

ADDRESS

Level 4
534 Church St, Richmond

STREET PARKING

Along Church St, fees apply

TRAIN

East Richmond Station

PAID PARKING

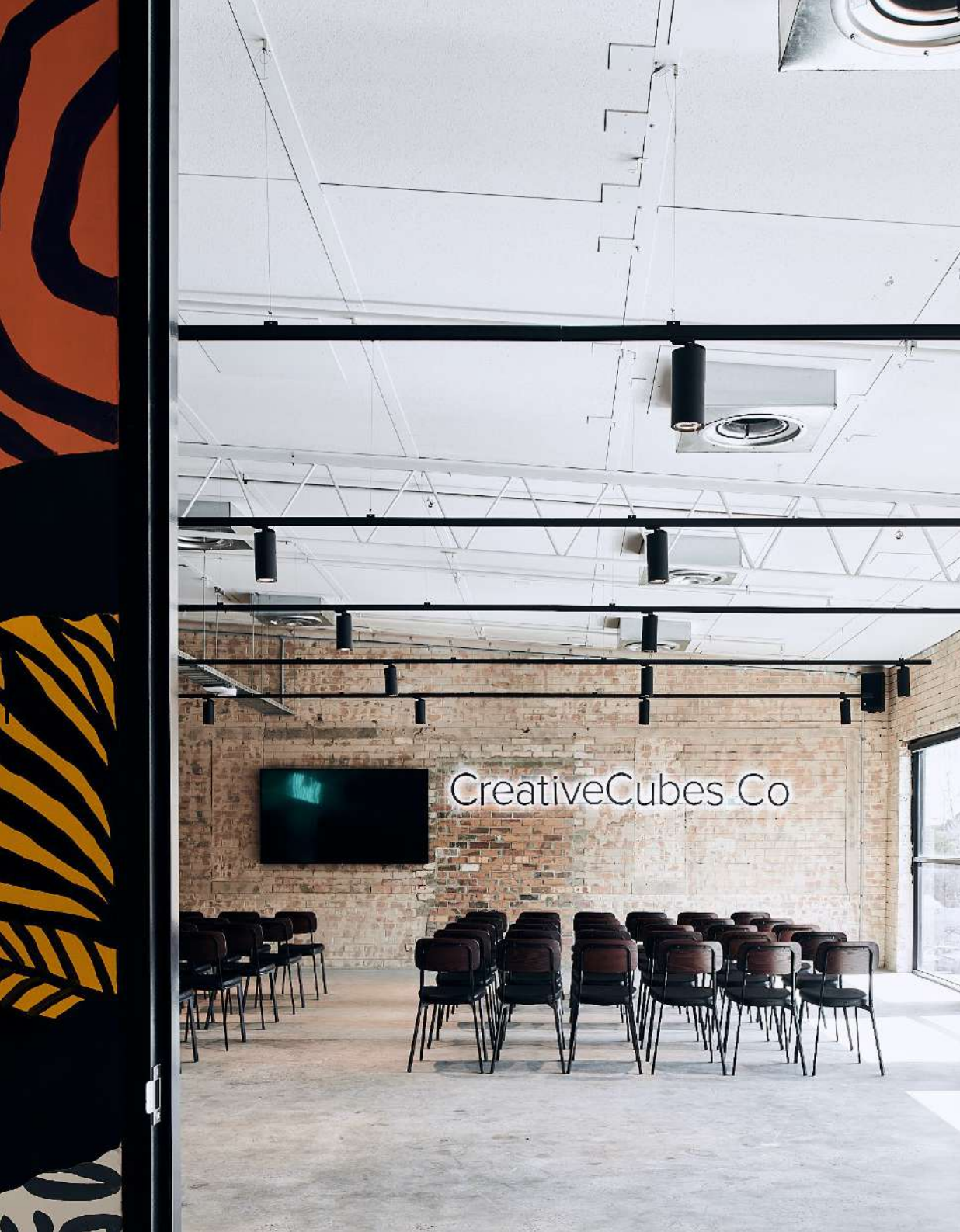
Ace Parking
560 Church St, Richmond (rear)

TRAM

Route 78
Gibbons St/Church St Stop
Adelaide St/Church St Stop

Wilson Parking
658 Church St, Richmond

East Richmond Station
(council parking)



LOOKING FOR
A DIFFERENT VENUE?

INTRODUCING MICDROP HAWTHORN

This ain't your Aunt Edna's Hawthorn. MicDrop Hawthorn brings Gotham City swagger to Melbourne's leafy inner east. Exposed brick and industrial-chic accents provide the perfect backdrop for events that will linger longer in people's memories.

Along with all the cutting-edge event-tech you'd expect from a space this fly, the 145sqm room includes dimmable lighting and blazing fast wifi, as well as breakout boardroom and meeting rooms for when you just can't contain all your good ideas in one space.

And to keep your team fuelled, catering partner Timber + Greens is on hand to curate and serve healthy, wholesome, delicious food sourced from local and (where possible) certified organic producers. Their coffee is out of this world too.

Ideal for workshops, team meetings, brainstorming and briefings, presentations and product launches. Not suitable for sheep shearing, drumming circles or anything boring.