

The deal with business.





Meeting at the right place.

THANK YOU FOR CHOOSING
ESPLANADE HOTEL FREMANTLE BY
RYDGES FOR YOUR NEXT MEETING,
CONFERENCE & EVENT.

Located in the heart of Fremantle, overlooking the inner city oasis of the Esplanade Park. The charming architecture, prime location and historic importance have created a truly unique business and leisure destination.

The vibrant City of Fremantle blends old with new, creating an enriching cultural experience only 30 minutes from the Perth CBD and Perth Airports. Maritime, convict and colonial story can be explored while buzzing markets, lively bars and casual street cafes gives you a taste of the 'Freo' lifestyle.

Home to one of Western Australia's largest convention and exhibition facilities with capacity up to 1000, the Hotel offers an outstanding choice of venues perfect for all types of events.

CONTENTS

Southern Cross Gala Ballroom	5
Indian Ocean Suite	7
Island Suite	9
Australia II & Leeuwin II Boardrooms	11
The Calista Room	13
Ball & Chain Pub	15
Resort Poolside	17
AV Equipment	18
Venue Floorplan	19
Function Room Capacities	20



ESPLANADE HOTEL
FREMANTLE
by RYDGES

34

35

20
FREMANTLE
MUSEUM
AWARDS

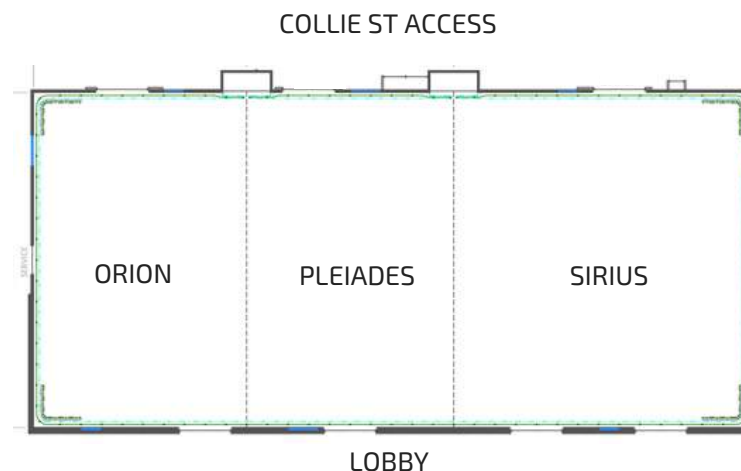
20
FREMANTLE
MUSEUM
AWARDS

Southern Cross

(Sirius, Pleiades + Orion rooms)

**DAY
DELEGATE
PACKAGE**

\$79
per person



The elegance and grandeur of the Southern Cross Gala Ballroom makes this space ideal for gala dinners, themed incentives, conferences and exhibitions. The ballroom is modern and spacious with neutral tones, built in audio visual, timber wall panelling and 6m high ceilings.

Area (square metres)	Ceiling Height	Booth 2x3m	Banquet	Banquet w/ Dance Floor	Cocktail	Classroom	Boardroom	Theatre	U-Shape	Cabaret
Southern Cross (799)	6m	54	700	590	1000	440	n/a	1000	n/a	560
Sirius (330)	6m	20	250	220	340	216	n/a	340	58	200
Pleiades (231)	6m	16	180	140	236	120	n/a	236	52	144
Orion (238)	6m	16	180	140	236	120	n/a	236	52	144

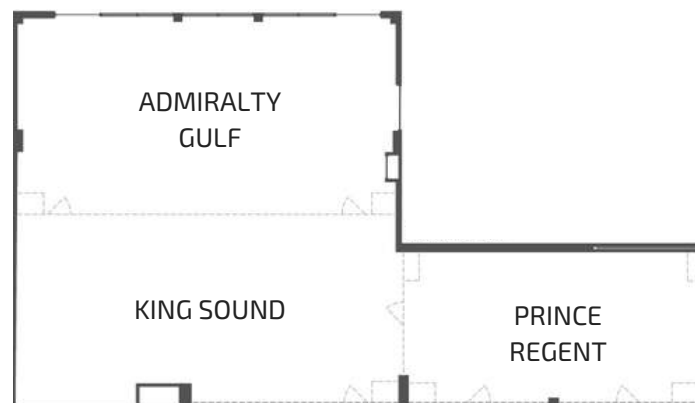


Indian Ocean Suite

(Admiralty Gulf, King Sound + Prince Regent rooms)

**DAY
DELEGATE
PACKAGE**

\$79
per person



The Indian Ocean Suite is located on the ground floor, overlooking one of the Hotel's tropical swimming pools with floor to ceiling windows bringing in an abundance of natural light. The flexible space is ideal for sit-down dinners, cocktail receptions, business breakfasts, meetings and seminars.

Area (square metres)	Ceiling Height	Booth 2x3m	Banquet	Banquet w/ Dance Floor	Cocktail	Classroom	Boardroom	Theatre	U-Shape	Cabaret
Indian Ocean Suite (261)	2.7m	17	110	110	250	80	n/a	140	40	128
Admiralty Gulf (102)	2.7m	7	60	40	70	36	30	70	25	48
King Sound (98)	2.7m	7	60	40	70	36	30	70	25	24
Prince Regent (61)	2.7m	4	30	n/a	40	24	20	40	n/a	48



STUDIO




ESPLANADE HOTEL
◆ FREMANTLE ◆
by RYDGES


ESPLANADE HOTEL
◆ FREMANTLE ◆
by RYDGES

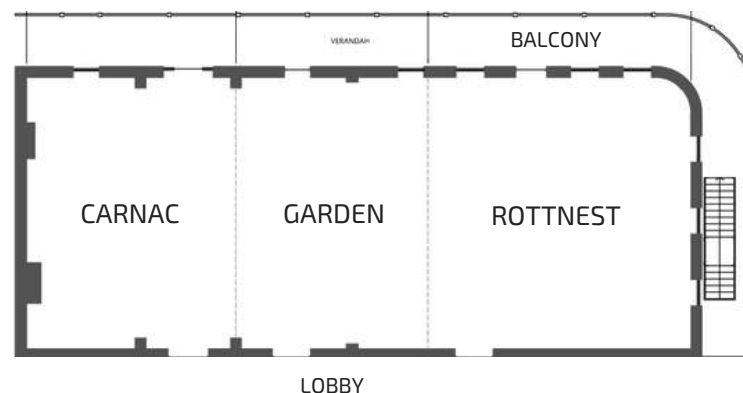

ESPLANADE HOTEL
◆ FREMANTLE ◆
by RYDGES

Island Suite

(Rottnest, Garden + Carnac rooms)

**DAY
DELEGATE
PACKAGE**

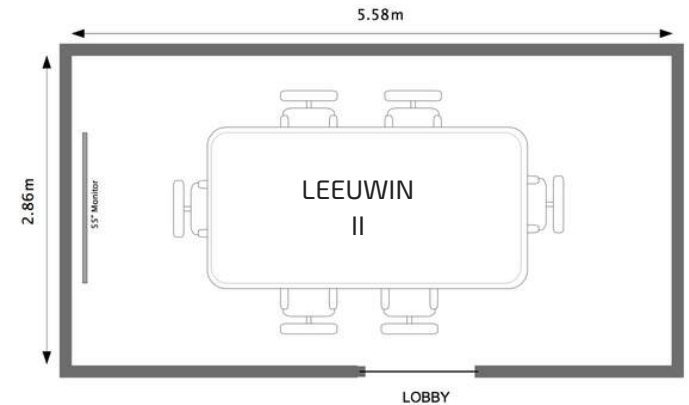
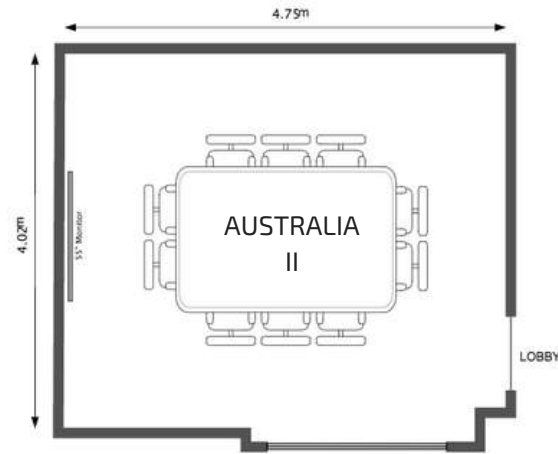
\$79
per person



The Island Suite is upstairs in the Hotel's heritage-listed, early 1900s building and features a sweeping balcony overlooking Marine Terrace. The balcony doors and stained glass embellished windows bring in natural light and look out over the trees and parkland across the road.

Area (square metres)	Ceiling Height	Booth 2x3m	Banquet	Banquet w/ Dance Floor	Cocktail	Classroom	Boardroom	Theatre	U-Shape	Cabaret
Island Suite (322)	2.9m	17	200	160	240	140	n/a	240	n/a	160
Rottnest (121)	2.9m	8	70	50	100	60	30	90	26	56
Garden (97)	2.9m	6	50	30	80	20	50	80	20	40
Carnac (100)	2.9m	7	50	30	80	40	20	70	20	40
Abrolhos (108)	2.7m	n/a	50	30	100	21	24	60	24	32





Australia II & Leeuwin II

**VENUE
HIRE
FROM**

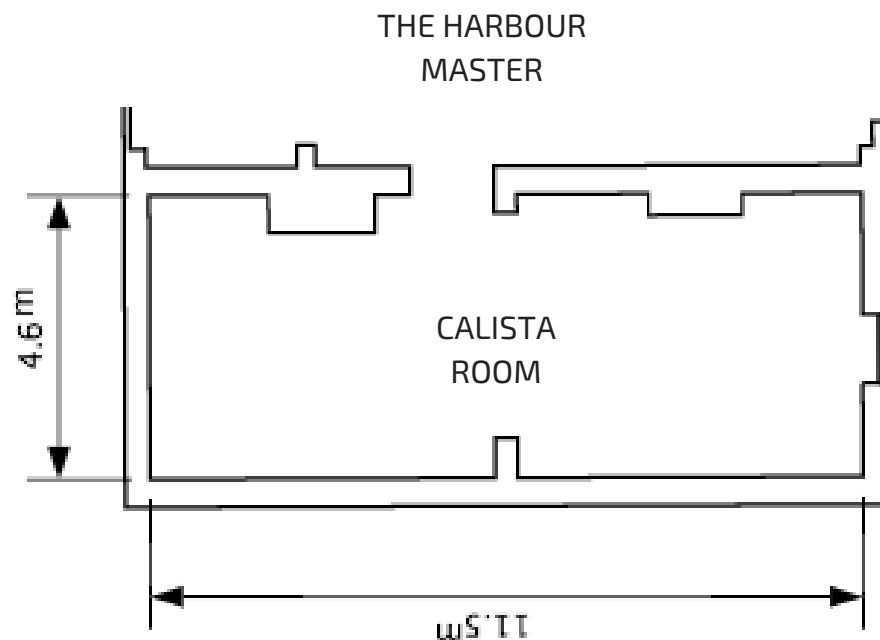
\$400
per day

The Australia II and Leeuwin II boardrooms celebrate Fremantle's maritime connection. These stylish meeting rooms seat ten and six guests respectively with modern decor, flat screen TVs for presentations and conference phone capabilities.



Calista Room

**VENUE
HIRE
FROM** **\$450**
 per day



The elegant Calista Room is a private dining venue located inside The Harbour Master restaurant; it features natural light and two gas fireplaces. If you are searching for a small function space in Fremantle to host your next event, the Calista Room is the perfect fit for long table dinners and lunches or a board meeting for up to 26 guests.



Ball & Chain

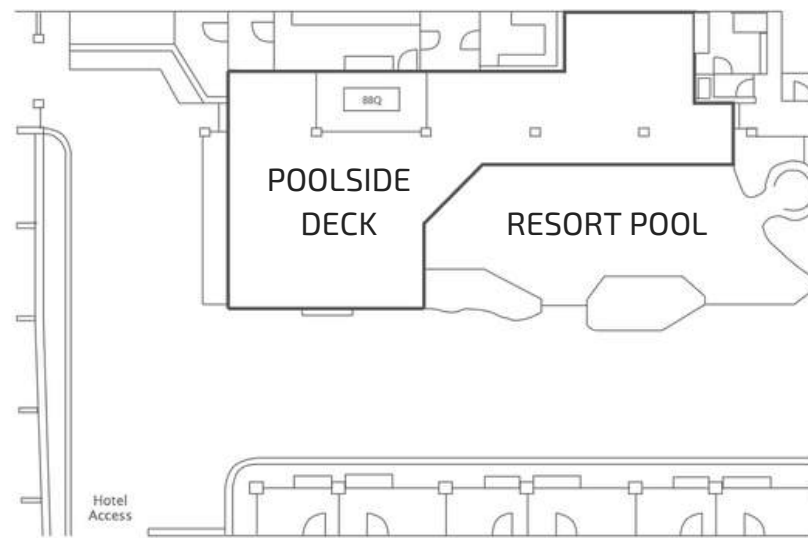
**PACKAGES
FROM** **\$30**
per person



The historic Ball & Chain pub dates back over 100 years, housing convicts before the Fremantle Prison was built. It is a unique venue for your next pre or post function celebrations with WA's largest range of Matilda Bay craft beer, an international whisky selection and delicious pub grub available. Your group can meet in the Bourbon Street Lounge, main bar or chill out in the sweet summer sun of the Beer Garden on Marine Terrace overlooking Esplanade Park



*Resort
Poolside*
VENUE
HIRE
FROM **\$650**
per day



The Resort Poolside offers a warm and inviting outdoor space surrounded by lush tropical gardens. It is a perfect venue for a cocktail event, BBQ or private function up to 400 people. Overlooking the pool, you and your guests can enjoy soaking up the sun on our pool deck.

AUDIO VISUAL & *theming*

AV Partners, our in-house audio visual specialists, will provide a personalised, stress free service for your event. Services on offer include:

AUDIO VISUAL

Ceiling mounted motorised projection screens

Ceiling mounted motorised data projectors

Intelligent table pinspot lighting

Ceiling speaker sound system

Themed lighting designs

Wireless presentation technology

AND MORE!

THEMING

Black velvet full room draping

Lycra backdrops

Table centre pieces

AND MORE!

Collie Street



Essex Street

Floor Plan & facilities

- FREE WI-FI
- 24-hour reception
- Valet parking
- 24-hour room service
- Business centre
- 5 unique restaurants & bars within the hotel
- 300 accommodation rooms
- 12 function rooms
- Fully equipped gymnasium
- 2 resort-style outdoor heated pools

	Area (m2)	Ceiling Height (m)	Booth 2x3m	Banquet	Banquet w/ Dance Floor	Cocktail	Classroom	Boardroom	Theatre	U-Shape	Cabaret
Southern Cross Ballroom (799)		6	54	700	590	1000	440	n/a	1000	n/a	560
	Sirius (330)	6	20	250	220	340	216	n/a	340	58	200
	Pleiades (231)	6	16	180	140	236	120	n/a	236	52	144
	Orion (238)	6	16	180	140	236	120	n/a	236	52	144
Indian Ocean Suite (261)	2.7	17	110		110	250	80	n/a	140	40	128
Admiralty Gulf (102)	2.7	7	60		40	70	36	30	70	25	48
King Sound (98)	2.7	7	60		40	70	36	30	70	25	24
Prince Regent (61)	2.7	4	30		n/a	40	24	20	40	n/a	48
Island Suite (322)	2.9	17	200		160	240	140	n/a	240	n/a	160
Rottneest (121)	2.9	8	70		50	100	60	30	90	26	56
Garden (97)	2.9	6	50		30	80	50	20	80	20	40
Carnac (100)	2.9	7	50		30	80	40	20	70	20	40
Abrolhos (108)	2.7	n/a	50		30	100	21	24	60	24	32
Australia II	2.38	n/a	10		n/a	n/a	10	10	n/a	n/a	n/a
Leeuwin II	2.38	n/a	6		n/a	n/a	6	6	n/a	n/a	n/a
Calista Room	2.42	n/a	28		n/a	n/a	n/a	26	n/a	n/a	n/a
Ball & Chain	2.42	n/a	30		n/a	130	n/a	n/a	n/a	n/a	n/a
Resort Poolside	n/a	n/a	150		n/a	400	n/a	n/a	n/a	n/a	n/a

let's do *business in Fremantle*



w: fcec.com.au/conferences p: +61 8 9432 4801
e: functions_esplanadefremantle@evt.com